

ASSESSMENT REPORTS

MAP No. 105-0-1 **TYPE OF WORK:** Watson Lake Mining Dist.

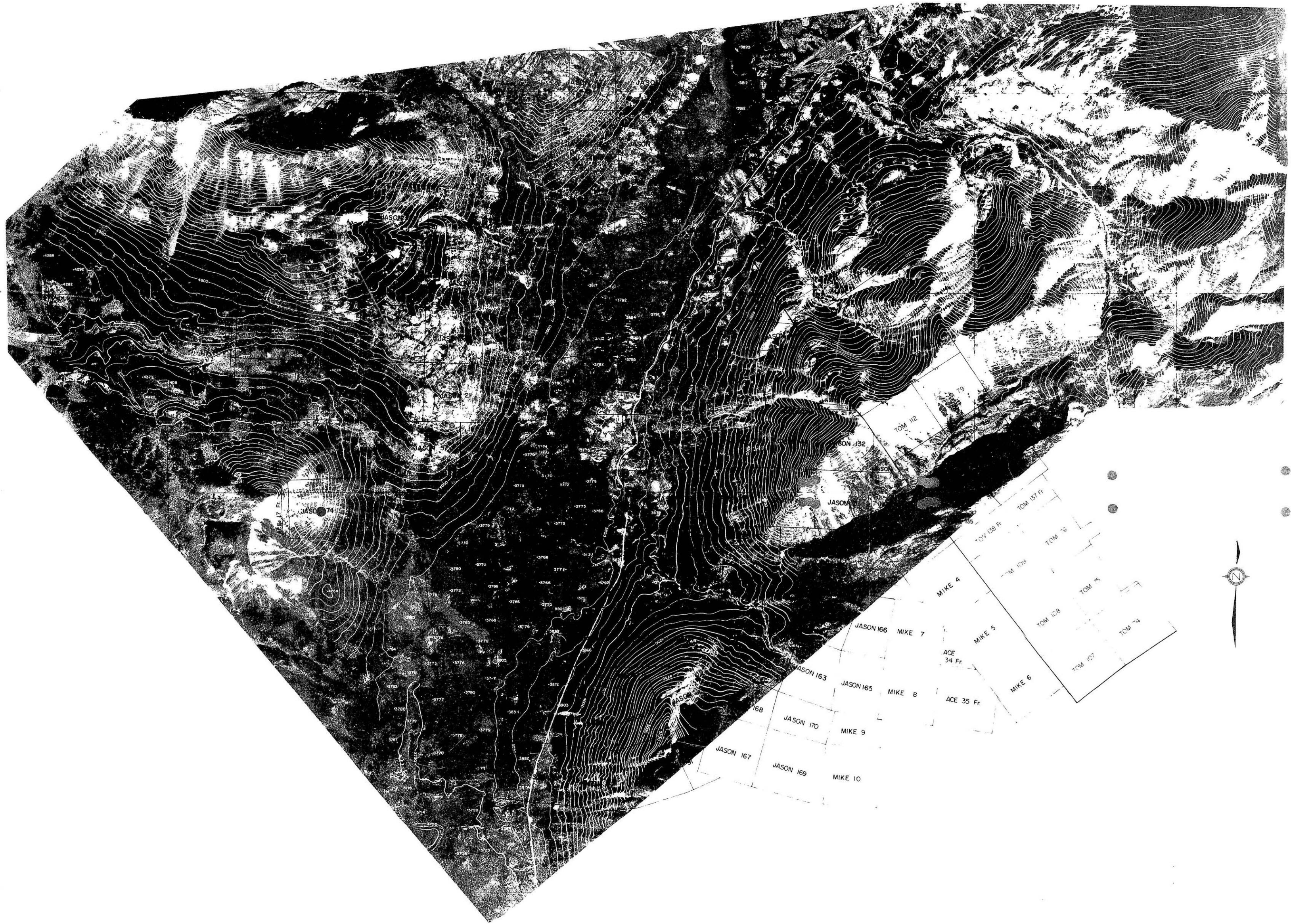
REPORT FILED UNDER	Ogilvie Joint Venture	061611
DATE PERFORMED	August 3, 1976	DATE FILED: December 3, 1976
LOCATION - LAT.	63°12'N	MacMillan Pass Area, Yukon
	LONG.	
CLAIM Nos.	Jason 161-176 Jason 135	
	Y84523	
\$4,900.00		
WORK DONE BY	North West Survey Corp. (Yukon) Ltd. John F. Welter	
WORK DONE FOR		
REMARKS	Orthophoto mapping	
	13.2 miles 1"=1000'	

ORTHOPHOTO MAPPING

JASON CLAIMS

105-0-1

OGILVIE JOINT VENTURE



ORTHOPHOTO MAP
OGILVIE JOINT VENTURE
MacMillan Pass Area Y.T.

SCALE
 100 FEET TO 1 INCH
 CONTOUR INTERVAL 25 FEET

1:40,000
 1:20,000
 1:10,000
 1:5,000

1974
 1975
 1976
 1977
 1978
 1979
 1980
 1981
 1982
 1983
 1984
 1985
 1986
 1987
 1988
 1989
 1990
 1991
 1992
 1993
 1994
 1995
 1996
 1997
 1998
 1999
 2000
 2001
 2002
 2003
 2004
 2005
 2006
 2007
 2008
 2009
 2010
 2011
 2012
 2013
 2014
 2015
 2016
 2017
 2018
 2019
 2020

1974
 1975
 1976
 1977
 1978
 1979
 1980
 1981
 1982
 1983
 1984
 1985
 1986
 1987
 1988
 1989
 1990
 1991
 1992
 1993
 1994
 1995
 1996
 1997
 1998
 1999
 2000
 2001
 2002
 2003
 2004
 2005
 2006
 2007
 2008
 2009
 2010
 2011
 2012
 2013
 2014
 2015
 2016
 2017
 2018
 2019
 2020

NORTH WEST SURVEY CORPORATION (YUAKI) LTD
 REVISED TO
 OCT 1976