

GEOCHEMICAL REPORT
on the JASON claims,
located about 10 miles SW of Macmillan Pass.
Claim Sheet 105-0-1, 63°09'N, 130°15'W

by

Clyde L. Smith, Ph.D., P.Eng.
July 15 through 28, 1976

TABLE OF CONTENTS

	Page
I. Introduction and General Geology	1
II. List of Claims	2
III. Techniques Employed	3
IV. Results and Interpretations	3
V. Conclusions and Recommendations	3
VI. Personnel Employed	4
VII. Qualifications of C. L. Smith, Author	4
VIII. Expenditures	5

LIST OF ILLUSTRATIONS

- Fig 1. Key Sketch, Location
Fig 2. Values and Contour Map for Lead,
Zinc and Barium in ppm

I. INTRODUCTION AND GENERAL GEOLOGY

During the period July 15 to July 28, 1976, a total of 6,100 feet of geochemical soil sampling was conducted on the grids shown on the accompanying location sketch (Fig 1.). Samples were taken from the upper portion of B horizon at an average depth of around six inches on stations spaced at 100 foot intervals along the lines shown; tie lines were not sampled.

The Jason claims were staked by Ogilvie Joint Venture in 1974 and 1975 and contain an area of geological, geophysical and geochemical interest which was diamond drilled in late 1975 and is currently being drilled in a effort to delineate a bedded barite horizon containing lead-zinc lying at a stratigraphic level similar to that of the Tom deposit a few miles to the east. The regional geology in the vicinity of the Jason claims is shown on the Nidderly Lake sheet of the Geological Survey of Canada. Three main rock units outcrop on the Jason property, as listed below:

Devonian

Black shale (unit 3)
Conglomerate (unit 2)

Ordovician-Silurian

Argillite (unit 1)

The principal structures are a gently-plunging anticline and syncline that are terminated to the west by a major fault that brings the underlying Ordovician-Silurian Road River formation into contact with the younger rocks listed above.

II. LIST OF CLAIMS

<u>Claim Name</u>	<u>Holder</u>	<u>Recording Date</u>
Jason 1-6	British Newfoundland Exploration Limited - In Trust	August 21-23, 1974
Jason 7-32	British Newfoundland Exploration Limited - In Trust	August 21-23, 1974
Jason 33-34	British Newfoundland Exploration Limited - In Trust	August 21-23, 1974
Jason 35-40	British Newfoundland Exploration Limited - In Trust	August 21-23, 1974
Jason 41-44	British Newfoundland Exploration Limited - In Trust	August 21-23, 1974
Jason 45-48	British Newfoundland Exploration Limited - In Trust	July 23, 1975
Jason 49-82	British Newfoundland Exploration Limited - In Trust	August 8, 1975
Jason 84	British Newfoundland Exploration Limited - In Trust	August 7, 1975
Jason 85-92	British Newfoundland Exploration Limited - In Trust	August 7, 1975
Jason 93-114	British Newfoundland Exploration Limited - In Trust	August 8, 1975
Jason 115-116	British Newfoundland Exploration Limited - In Trust	August 7, 1975
Jason 117-122	British Newfoundland Exploration Limited - In Trust	August 8, 1975
Jason 123-124	British Newfoundland Exploration Limited - In Trust	August 7, 1975
Jason 125-130	British Newfoundland Exploration Limited - In Trust	August 8, 1975
Jason 131-134	British Newfoundland Exploration Limited - In Trust	August 7, 1975
Jason 135-136	British Newfoundland Exploration Limited - In Trust	March 15, 1976 ?
Jason 138-140	British Newfoundland Exploration Limited - In Trust	March 15, 1976 ?
Jason 141-160	British Newfoundland Exploration Limited - In Trust	August 8, 1975
Jason 161-176	British Newfoundland Exploration Limited - In Trust	November 12, 1975
Mike 1-2	British Newfoundland Exploration Limited - In Trust	June 7, 1976 ?

III. TECHNIQUES EMPLOYED

Soil samples were collected from the B horizon in pits dug by iron mattock on a spacing of 100 feet along lines. Sample drying and analysis were carried out by Barringer Research of Whitehorse. After being dried and screened, 250 mg. of -80 mesh material was digested for 4 hours in perchloric acid, the volume diluted to a standard volume and this solution analysed on an atomic absorption spectrometer for Pb and Zn. For barium a 250 mg sample was digested for one hour in EDTA, the volume adjusted and the solution analysed by atomic absorption spectrometer.

IV. RESULTS AND INTERPRETATIONS

Figure 2 is a geochemical values and contour map of the grid area. No significant lead values were obtained. Zinc values of in excess of 100 ppm Zn show a narrow north-trending anomalous zone of low magnitude. Parallel to the zinc zone a few hundred feet to the east is a narrow north-trending zone of anomalous barium values in excess of 300 ppm.

The two elongated anomalies lie parallel to the base of a mountain slope which rises to the east and correspond in position with a level of seepages emerging along the slope.

Outcrop upslope is unit 3, the lower portion of which contains the Tom deposit to the east. Geochemical values over mineralization to the north on the Jason grid and on the Tom are considerably higher than on this grid, and additional work is not recommended on the basis of results obtained.

V. CONCLUSIONS AND RECOMMENDATIONS

Geological values are low and additional work in this area is not recommended based on these results.

VI. PERSONNEL EMPLOYED

Clyde L. Smith, Geologist
5354 - 6th Avenue,
Delta, B.C.

Charlie Ollie, Soil Sampler,
General Delivery,
Ross River, Y.T.

John Russell,
General Delivery,
Ross River, Y.T.

VII. QUALIFICATIONS OF C. L. SMITH, AUTHOR

Education

Carleton College, Northfield, Minn., U.S. - B.A. received 1959

University of B.C., Vancouver, B.C. - M.Sc. received 1962

University of Idaho, Moscow, Idaho, U.S. - Ph.D. received 1966

Employment

1970 - present: Consulting Geologist, Vancouver, B.C.

1968 - 1970: Director and Exploration Manager,
Spartan Explorations Limited

1966 - 1968: Chief Geologist, Atlas Explorations Limited

1965 - 1966: Senior Geologist, Kerr-Addison Mines Ltd.

Professionals

Registered Professional Engineer, Association of
Professional Engineers, Province of British Columbia.

VIII. EXPENDITURES

Salaries: C. L. Smith, supervision	\$ 300.00
C. Ollie, sampler	360.00
J. Russell, sampler	300.00
Helicopter: 4 hours @ \$170.00/hour	680.00
Subsistence: 3 men x 5 days @ \$15/day	215.00
Geochemical analysis: 60 samples @ \$3.25 each	<u>195.00</u>
TOTAL	<u>\$2,050.00</u>

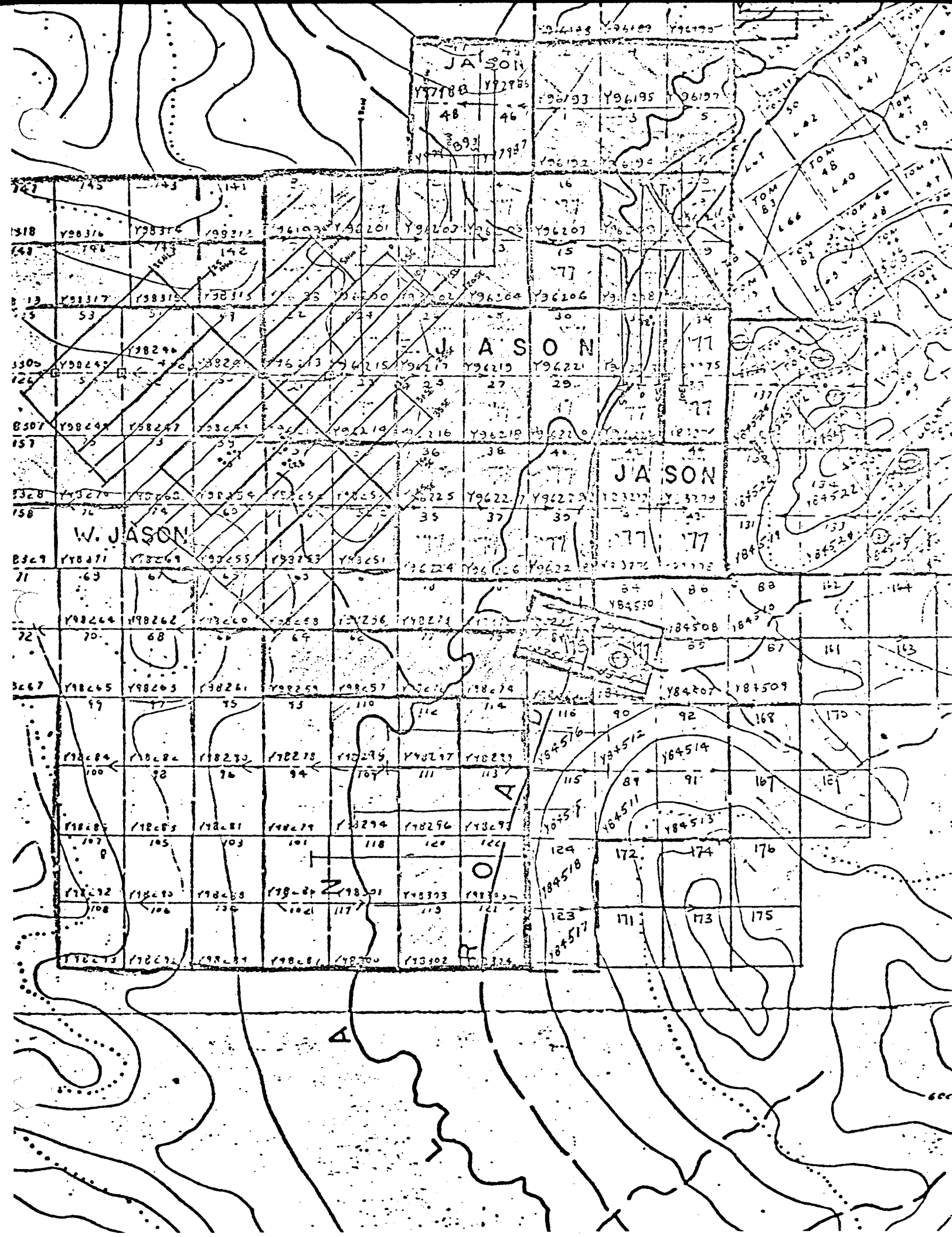
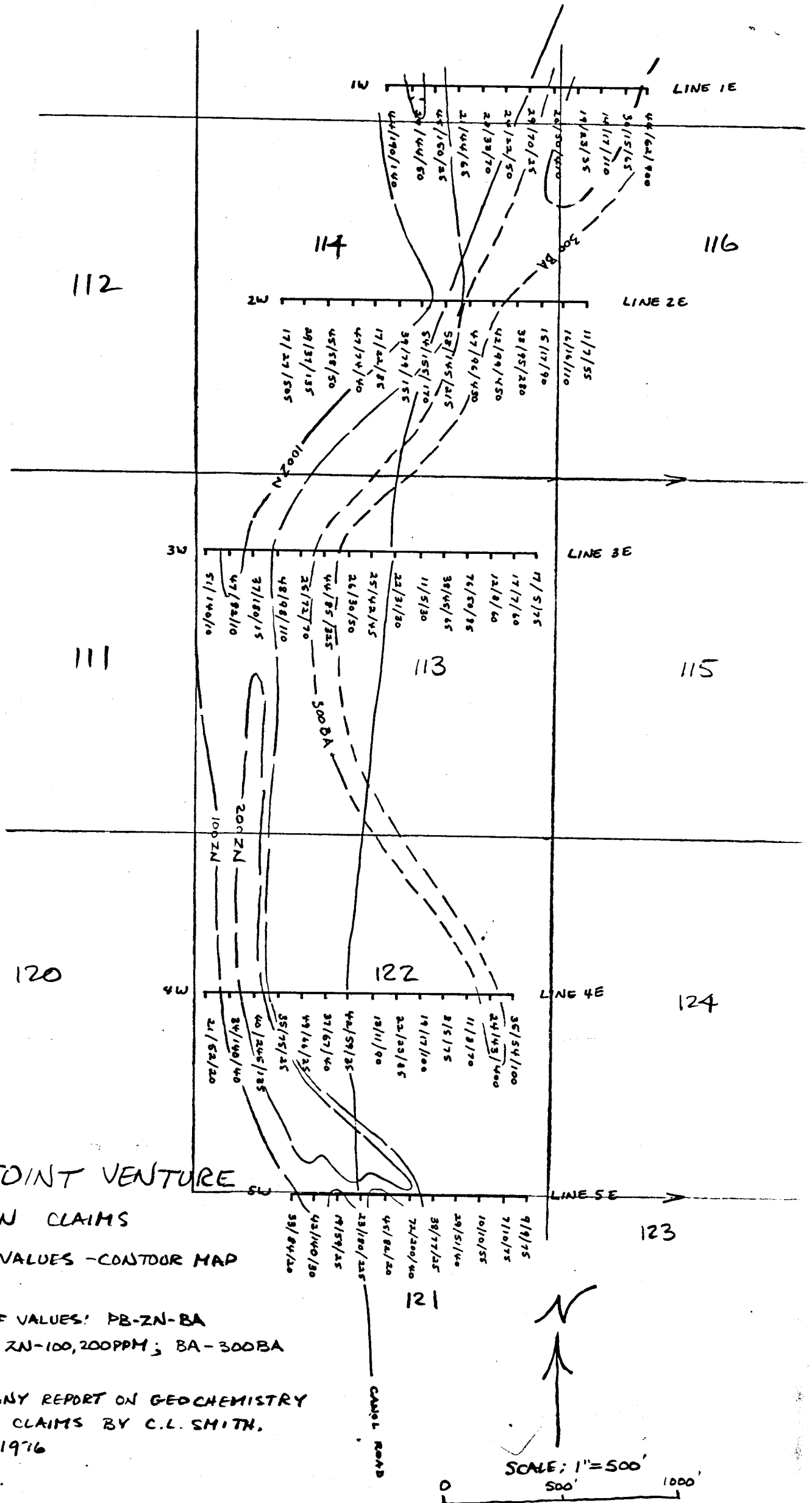


FIG. 2



OGILVIE JOINT VENTURE
 JASON CLAIMS
 GEOCHEMICAL VALUES - CONTOUR MAP

SEQUENCE OF VALUES: PB-ZN-BA
 CONTOURS: ZN-100, 200PPM; BA-300BA

TO ACCOMPANY REPORT ON GEOCHEMISTRY
 OF JASON CLAIMS BY C.L. SMITH,
 AUGUST, 1976

SCALE: 1" = 500'