



## GEOCHEMICAL REPORT

on the BOB claims,  
located about 1½ miles east of the south end of Fortin Lake.  
Claim sheet 105G-15, 61°56'N 130°32'W.

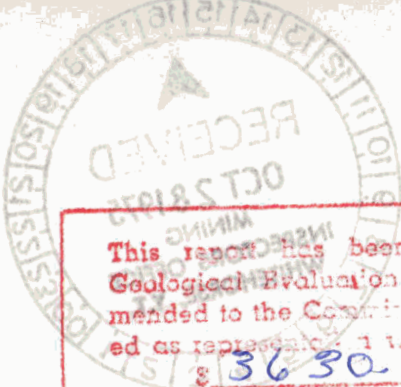
by  
Clyde L. Smith, Ph.D., P.Eng.  
June 4, 5 & 6, 1975.

## TABLE OF CONTENTS

	page
I. Introduction and General Geology	1
II. List of Claims	1
III. Techniques Employed	1
IV. Results and Interpretation	3
V. Conclusions and Recommendations	3
VI. Personnel Employed	3
VII. Qualifications of C. L. Smith, Author	3
VIII. Expenditures	5

## LIST OF ILLUSTRATIONS

	page
Fig 1. Key Sketch, Location	2
Fig 2. Grid Sampled with Geochemical Results	4



This report has been examined by the Geological Evaluation Unit and is recommended to the Commissioner to be considered as representation work in the amount of \$ 3630.00

*D.B. Craig*  
Resident Geologist or  
Resident Mining Engineer

Considered as representation work under Section 53 (4) Yukon Quartz Mining Act.

*[Signature]*  
D.R. BAXTER  
Supervising Mining Recorder  
Commissioner of Yukon Territory



## I. INTRODUCTION AND GENERAL GEOLOGY

During the period June 4, 5 and 6, 1975, Ogilvie Joint Venture carried out a geochemical survey on a grid in the vicinity of the main showings of the BOB claims, near Fortin Lake (see Fig 1). Geological examination and prospecting of the phyllites that form the bedrock in this area are greatly hampered by the presence of a blanket of Quaternary drift and it was hoped that geochemical sampling might allow an assessment of the underlying older rocks. In the area of the showings quartz veins in quartzose phyllites contain chalcopyrite, galena and sphalerite. One vein that contains 30-60% sphalerite is 1'6" wide and is exposed for about 20'. Details of these showings are described in a separate geological report.

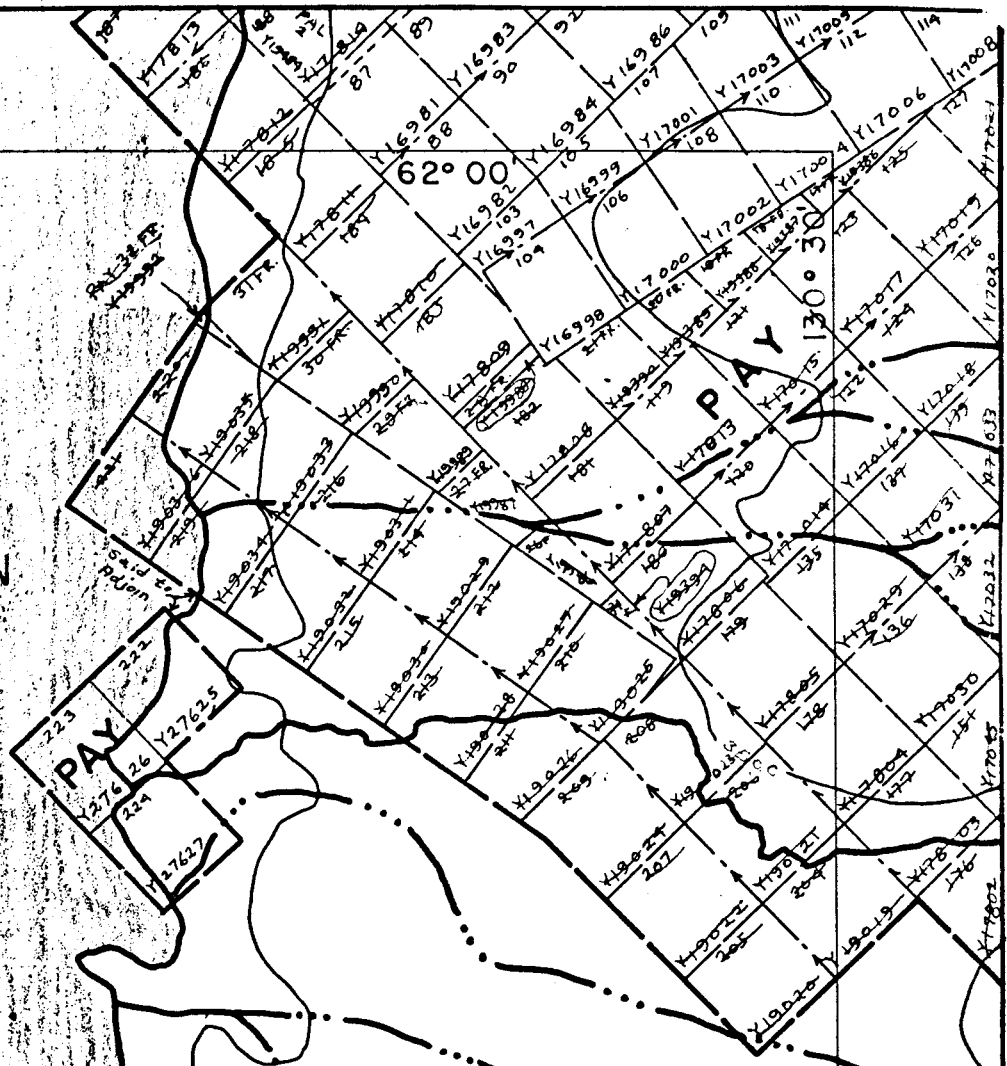
## II. LIST OF CLAIMS

<u>Claim Name</u>	<u>Holder</u>	<u>Numbers</u>	<u>Recording Date</u>
BOB 1-8	S. Macleod	Y83258-Y83265	Aug. 21-23, 1974
" 9-16	E. Ladue	Y83266-Y83273	"

## III. TECHNIQUES EMPLOYED

Samples were collected on a grid with spacing of 1500' between lines and a sample interval of 100'. Soil from the B horizon was taken from pits dug with an iron mattock, and placed in a Kraft paper bag. Sample drying and analysis were performed by Barringer Research of Whitehorse. After drying and screening 250 mg of -80 mesh material was digested for 4 hours in perchloric acid, the volume made up to a fixed volume and the solution analysed by atomic absorption spectrometer for Cu, Pb and Zn.

FORTIN  
LAKE



\* NEED B

GEOCHEMICAL GRID  
MAIN SHOWINGS

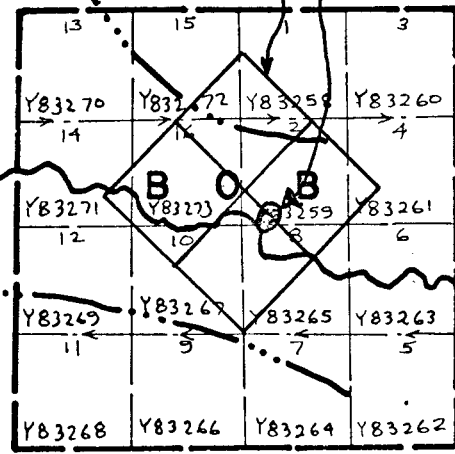


FIG 1 KEY SKETCH, LOCATION:  
(CLAIM SHEET 105 G-15)

OGULVIE SOUTH VERMONT, 1975

SCALE 1/2 MILE TO 1 INCH

#### IV. RESULTS AND INTERPRETATION

Results of all analyses are plotted on Fig 2.

No anomalous values for Pb, Cu or Zn were obtained, either because no significant mineralisation exists in the samples area, or because the thick overburden masks any metal-rich zone in the bedrock.

#### V. CONCLUSIONS AND RECOMMENDATIONS

The extent of mineralisation exposed in the two main showings has not been determined and several thousand feet of exploratory drilling should be considered. A gravity survey should be done on the same grid as the geochemical survey to test the possibility that a mineralised zone in the bedrock has no geochemical expression because of masking by thick overburden.

#### VI. PERSONNEL EMPLOYED

T. Pham, field worker; present address unknown  
G. Gamache, field worker; Maple Ridge, B.C.

#### VII. QUALIFICATIONS OF C. L. SMITH, AUTHOR

Education: Carleton College, Northfield, Minn., U.S. - B.A. rec'd 1959  
University of B.C., Vancouver, B.C. - M.Sc. rec'd 1962  
University of Idaho, Moscow, Ida., U.S. - Ph.D. rec'd 1966

Employment: 1970-present: Consulting Geologist, Vancouver B.C.  
1968-1970: Director and Exploration Mgr., Spartan Explorations  
1966-1968: Chief Geologist, Atlas Explorations Ltd.  
1965-1966: Senior Geologist, Kerr-Addison Mines, Ltd.

Professional: Registered Professional Engineer, Association of Professional Engineers, Province of British Columbia

15 NW

15 SE

APPROX CLAIM BOUNDARIES

0

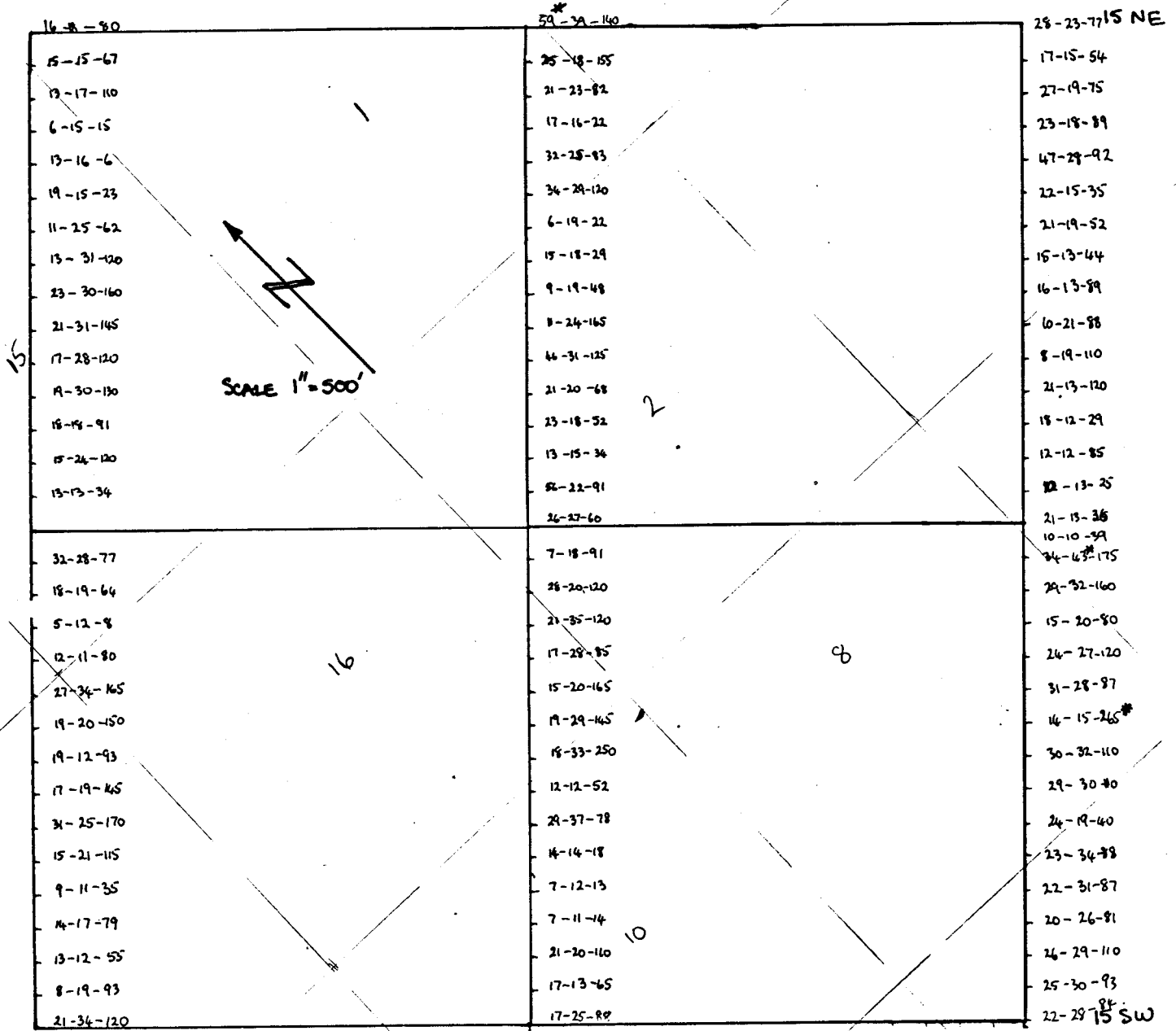


FIG 2. BOB CLAIMS GEOCHEMICAL SURVEY Cu-Pb-Zn (ppm)

## VIII. EXPENDITURES June 4, 5 and 6, 1975

Helicopter: 8 hrs @ \$140/hr	\$1120.00
Fuel: 128 gal @ \$1.20/gal	150.00
Salaries	180.00
Subsistence	60.00
Equipment and Expediting	60.00
Geochemical Analyses	<u>210.00</u>
TOTAL	\$1780.00