

This report has been examined by the Geological Evaluation Unit and is recommended to the Commissioner to be considered as representation work in the amount of \$ 1016.00

J.R. Craig

~~Resident Geologist of
Resident Mining Engineer~~

Considered as representation work under Section 53 (4) Yukon Quartz Mining Act.

Phillipie

~~Commissioner of Yukon Territory~~
ADMINISTRATOR OF THE YUKON TERRITORY

A

GEOLOGICAL REPORT

ON

DAV MINERAL CLAIMS 1-8

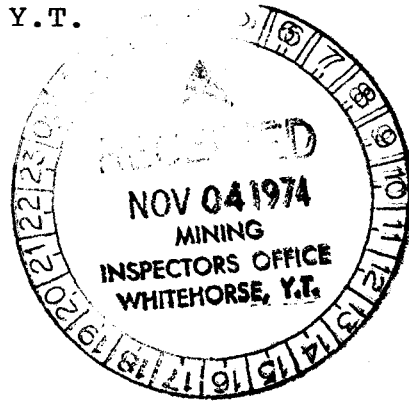
011057

Sheet 116-J-5

13 miles S.W. of Bear Cave Mtn.

139°42'/66°17'

WATSON MINING DIVISION, Y.T.



by

H.R. Bullis

June 19 - August 13, 1974



TABLE OF CONTENTS

	<u>Page</u>
Introduction and Summary	1
Ownership	2
Location and Access	2
Work Record	3
Geology	3
Mineral Showings	4
Conclusions and Recommendations	5

Appendix:

I Personnel working on Dav
mineral claims.

II Breakdown of expenditures.

List of Illustrations:

Fig. 1 Claims location map

Fig. 2 Claims survey

Fig. 3 Geology

Fig. 4 Cross-section A-A

Introduction and Summary

The Dav mineral claims 1-8 were staked in August, 1973 for C. Smith and were optioned by Brascan Resources Limited in the fall of 1973.

During the course of the work on the claims in 1974 no mineralization was found although nine man-days were spent prospecting the ground. The geology on the Dav claims is similar to the mineralized area further east, and the dolomites which host mineralization in other areas is present on the property; however, on the Dav these rocks are not mineralized. It is therefore recommended that Brascan Resources Limited relinquish their option on the claims and turn them back to C. Smith.

During the course of the work to date a total of \$1,016.00 has been spent.

Ownership

The Dav mineral claims 1-8 were staked in late August, 1973, under the supervision of Mr. Clyde Smith to whom the title of the claims was later passed. The claims were recorded in Dawson City, Y.T. on August 29, 1973. In the fall of 1973, Brascan Resources Limited acquired an option on the Dav group and may earn a ninety percent interest in the claims providing they carry out stipulated work commitments.

Location and Access

The Dav claims are located near 139°42'/66°17' approximately eighteen miles southwest of Bear Cave Mountain. The claims fall within the boundaries of NTS sheet 116-J-5. The Dempster Highway lies about sixty miles to the east but there are no other all-weather roads in the area.

Access to the claims during the summer months is limited to helicopters. The nearest all-weather airstrip is the Mallard airstrip lying about thirty-five miles to the south and it is accessible only to light aircraft or S.T.O.L.-equipped aircraft. Another all-weather 'strip, the Cath, lies about thirty-five miles to the east of camp. Therefore, during the summer months only supplies destined for the Erin claims must be freighted up the Dempster Highway to the Mile 166 airstrip and either flown in from there by helicopter or flown in by fixed-

Cont/d.

wing aircraft to an all-weather 'strip and from that point by helicopter.

During winter months two airstrips, both within twenty miles of the claims group can be used as staging points. One is at Bear Cave Mountain and the other, known as Blackfly, lies about twelve miles west of the claims.

Work Record

A base-camp was established on Fishing Branch Creek, about six miles north of the claim block, and from that point, helicopter-assisted traverses were run on the Dav group. The first traverse was run on June 19 when G. McArthur, M. McArthur and T. Hubl began mapping. This work continued on June 21 and 22. On August 10, 11 and 12 T. Hubl and A. Cook tied in all claim posts with a chain and compass survey. Once the claim survey was completed, geological maps were drawn up.

Geology

The underlying geology on the Dav is a repeating sequence of limestones and dolomites. The sequence is repeated as the result of block faulting along a north-south regional fault. At the top of the section (highest topographically, as well) there is a unit of limestones made up of

up to 60 percent crinoid remains. Below these there is a unit of light to medium gray fine-grained limestones and beneath these are found dolomites. Although outcrop is scarce on the claim group a fairly accurate idea of the geology can be formed by studying the rock in the talus.

Along the ridge forming the eastern flank of the claims the crinoidal limestones begin to form anticlinal crests. The predominant bedding dip on the property is towards the west.

Mineral Showings

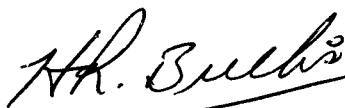
Although nine man-days were spent in detailed mapping and prospecting, no mineralization of any type was noted on the claims.

Conclusions and Recommendations

It would appear that there is little or no mineralization on surface on the Dav claims and no indications that mineralization is close beneath the surface.

It is recommended, therefore, that Brascan Resources Limited relinquish their option on the Dav group and return them to the original owner, C. Smith.

Respectfully submitted
this 13th day of August, 1974.



H.R. BULLIS, B.Sc.

I hereby certify that the work described in this report was carried out under my supervision.

F.B. WHITING

Member: Assoc. of Prof. Engineers
(Yukon)

Member: Assoc. of Prof. Engineers
(B.C.)



Appendix I

Personnel working on Dav mineral claims:

Supervisor	H.R. Bullis 206 - 1318 56th Street Delta, B.C.
Geologist	G. McArthur 209 - 1450 Chesterfield Ave. North Vancouver, B.C.
Geologist	M. McArthur 209 - 1450 Chesterfield Ave. North Vancouver, B.C.
Assistant	A. Cook 1091 Laburnum Road Victoria, B.C.
Assistant	T. Hubl Box 496 5959 Student Union Mall University of B.C. Vancouver, B.C.

Appendix II

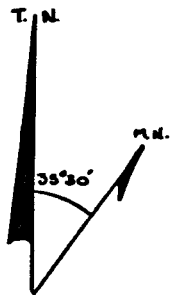
Breakdown of expenditures on the Dav mineral claims:

Date	Wages	Helicopter Support *	Camp** Costs
June 19	\$ 107	\$ 188.5	\$ 30
21	107	188.5	30
Aug. 10	62	81.0	20
12	112		30
13	50		10
Totals	\$ 438	\$ 458.0	\$ 120

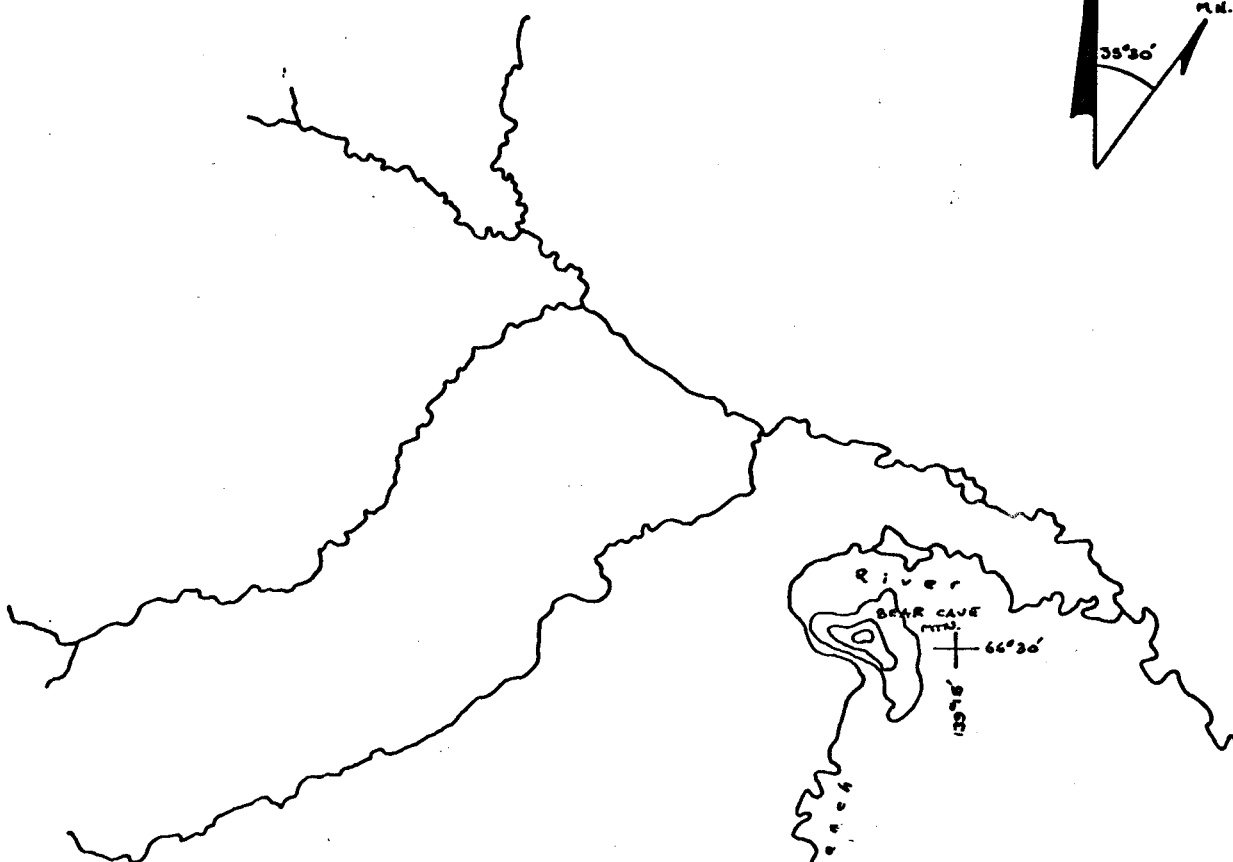
GRAND TOTAL \$1,016.00

* Trans North Turbo Air invoices Nos. 3100, 3102 and 3152.

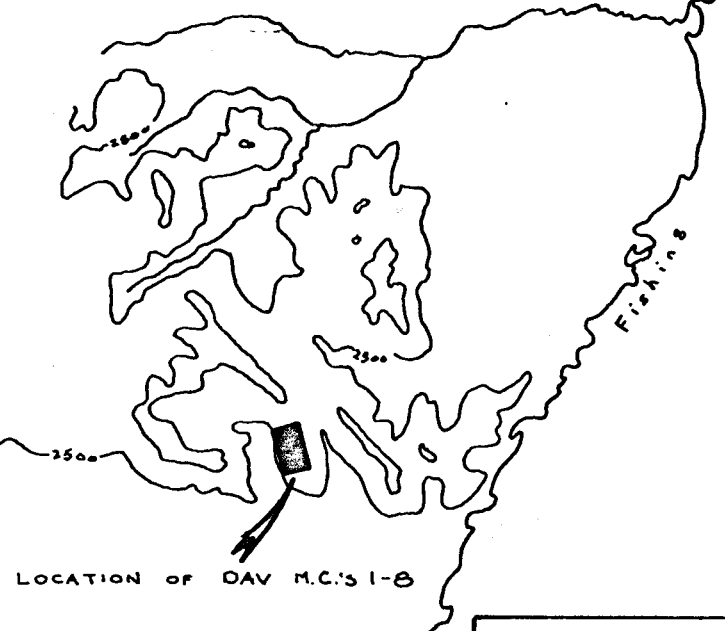
** Based on \$10.00 per man per day.



66°26' — 140°00'



66°15' — 140°00'



H. R. Bullis

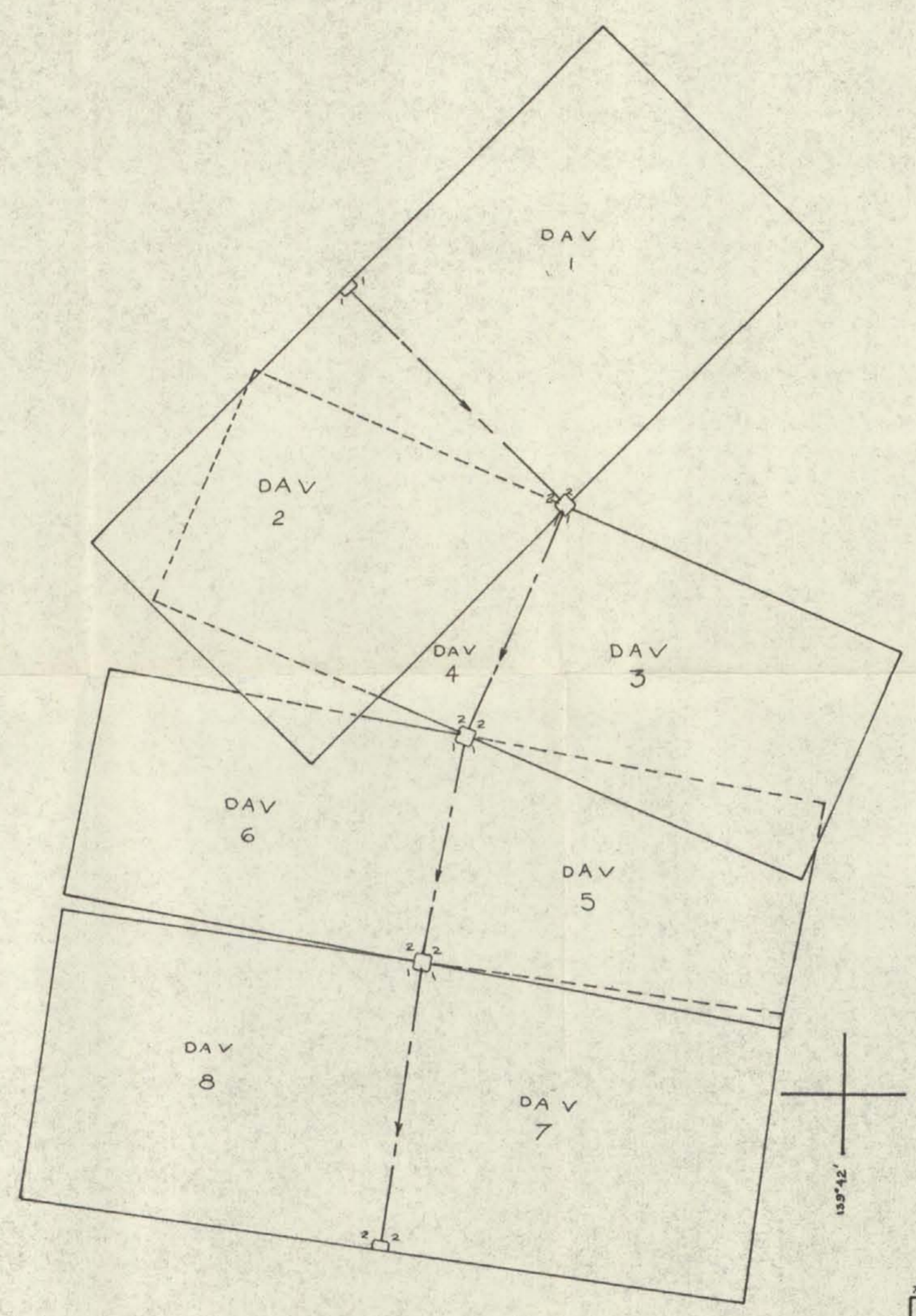
66°15' — 139°15'

Brascan Resources Limited

CLAIMS LOCATION MAP
DAV MINERAL CLAIMS
DAWSON MINING DIVISION
YUKON TERRITORY

Scale: 1" = 4 miles (approx)	FIG: 1
Date: August 11, 1974	By: H. R. Bullis

To accompany Assessment Report by H.R. Bullis - Aug. 13, 1974
Traced from 1"=4 mile N.T.S. sheet 116 J-K(EK)-Porcupine River



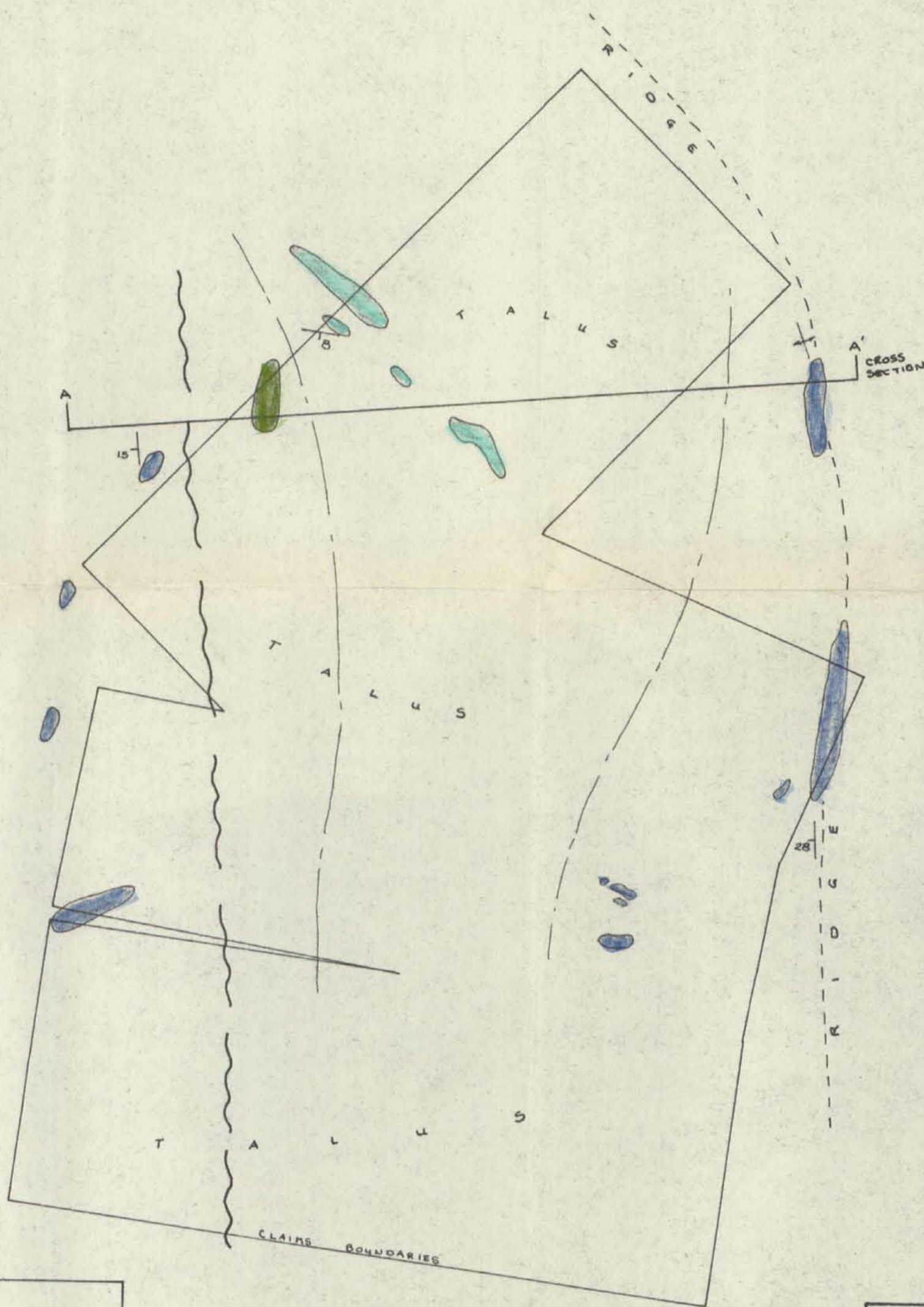
DAV M.C.'s recorded on August 29, 1873

[Handwritten signature]

Note: claims surveyed by A. Cook and T. Hubl using chain and compass.

To accompany Assessment Report by H.R. Gullis (August 13, 1974)

BRASCAN RESOURCES LIMITED	
CLAIM SURVEY DAV MINERAL CLAIMS DAWSON MINING DIVISION YUKON TERRITORY	
SCALE: 1" = 500 FEET	FIG: 2
DATE: August 12, 1974	BY: H.R. Gullis

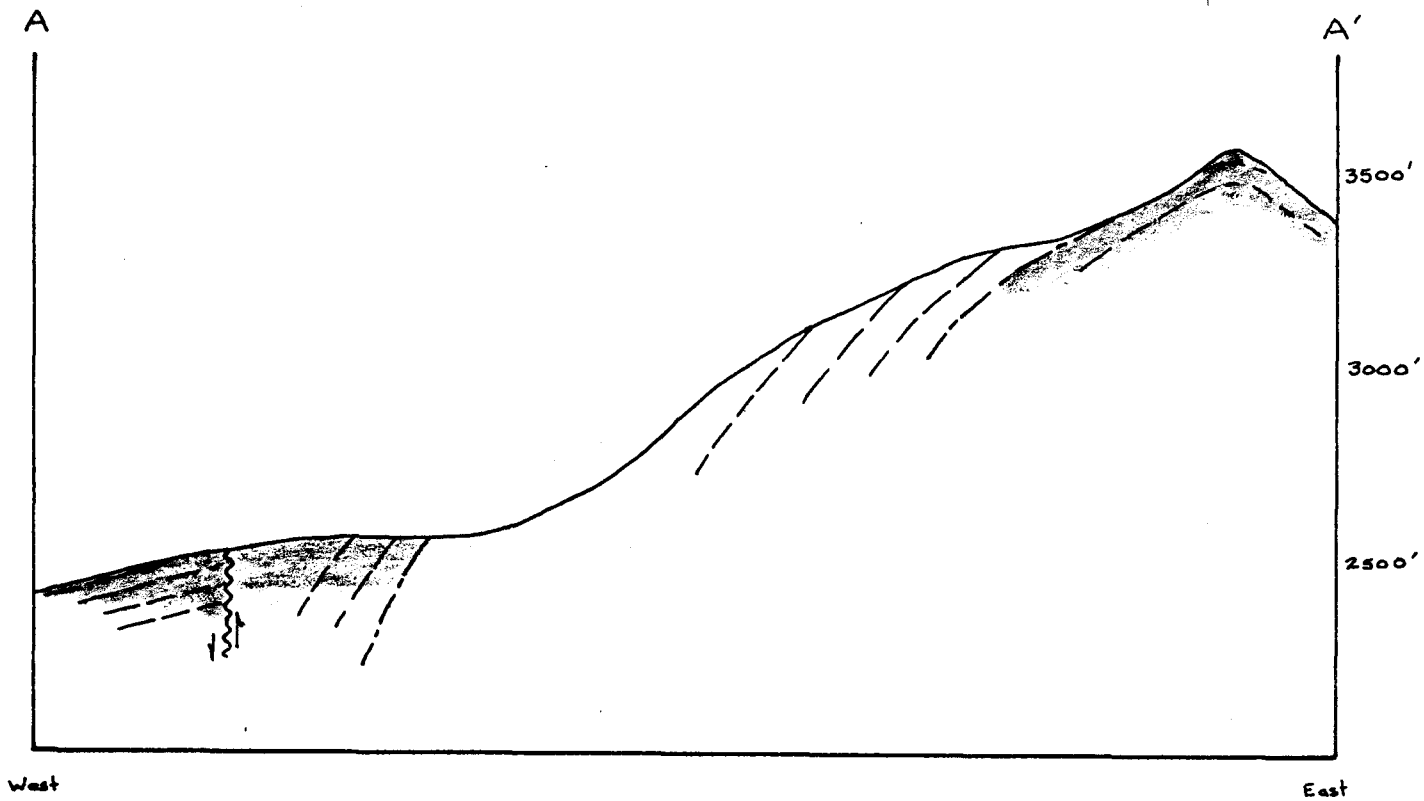


[Handwritten signature]







L E G E N D	
	Crinoidal Limestone
	Light to medium-gray fine-grained Limestone
	Dolomites
	Geological contact - inferred
	Outcrop
	Fault
	Strike and dip of bedding.
	Anticline

BRASCAN RESOURCES LIMITED		
GEOLOGY		
DAV MINERAL CLAIMS		
DAWSON MINING DIVISION YUKON TERRITORY		
SCALE: 1" = 500 FEET	GEOLOGY: G. McArthur T. Hubl	FIG: 3
DATE: August 12, 1974	DRAWN BY: H.R. Bullis	

76 accompany Assessment Report by H.R. Bullis (Aug 13, 74)



LEGEND

-  "Crinoidal" Limestone
-  Light- to medium-gray fine-grained Limestone
-  Dolomites
-  Bedding
-  Geological contact
-  Fault or thrust

To accompany Assessment Report by H.R. Bullis (August 13, 1974)

Brascan Resources Limited

CROSS-SECTION A-A'
 OAV MINERAL CLAIMS
 DAWSON MINING DIVISION
 YUKON TERRITORY

Scale: Vertical/Horizontal: 1"=500'

FIG: 4

Date: August 13, 1974

By: H.R. Bullis