

ARCHER, CATHRO
AND ASSOCIATES LTD.
CONSULTING GEOLOGICAL ENGINEERS

Box 4127, WHITEHORSE, Y.T. Y1A 3S9 667-4415

BENTALL CENTRE, VANCOUVER, B.C. 688-2568

685 TWO BENTALL CENTRE
555 BURRARD ST.
VANCOUVER, B.C.
V7X 1G4

Summary Report
Diamond Drill Program

on

ALP CLAIM PROPERTY

Map Sheet 115-H-9

Latitude: $61^{\circ}37'N$

Longitude: $136^{\circ}11'W$

Whitehorse Mining District, Yukon

for

B.A. COPPER MINES LTD.

January 22, 1974

A.R. Archer

Consulting Geological Engineer

061042

ARCHER, CATHRO
AND ASSOCIATES LTD.
CONSULTING GEOLOGICAL ENGINEERS

BOX 4127, WHITEHORSE, Y.T. Y1A 3S9 667-4415

BENTALL CENTRE, VANCOUVER, B.C. 688-2568

685 TWO BENTALL CENTRE
555 BURRARD ST.
VANCOUVER, B.C.
V7X 1G4

January 22, 1974

Mr. A.T. Willett
President
B.A. Copper Mines Ltd.
208 - 1033 Davie Street
Vancouver, B.C.

Dear Mr. Willett,

Re: Alp Claims, Yukon Territory

This letter is written as an addendum to my report of 21 June, 1973, titled "Geological and Geochemical Report on Alp 3-73 Claims". The 1000 foot diamond drill hole recommended in the report was completed to a final depth of 1001 feet under contract to E. Caron Diamond Drilling Ltd. of Whitehorse during the period 31 August to 24 September, 1973.

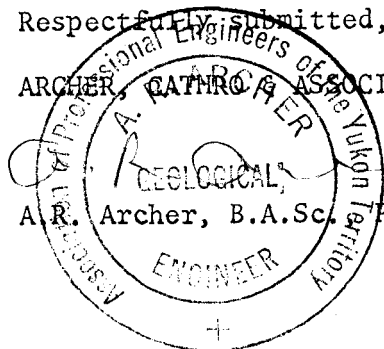
The core was moved to Whitehorse in December, 1973, for permanent storage in the Department of Indian Affairs and Northern Development H.S. Bostock core library. Logging was completed by M.P. Phillips in early January and a copy of the log is attached. The hole cut weakly brecciated, dark green, aphanitic, Triassic andesitic volcanics containing numerous crowded phenocrysts of fine, white feldspar and scattered fresh, black phenocrysts of hornblende. Bleached zones up to a foot wide are common from 80 to 760 feet. These are white to pale green in colour and usually exhibit weak clay carbonate alteration

of feldspar and chloritic alteration of hornblende. The zones are sub-parallel and may represent a formational feature in the volcanics, possibly tuffaceous horizons.

Pyrite is found throughout the core as weak disseminations and narrow fracture fillings. It is slightly more abundant in and near bleached zones. Minute traces of chalcopyrite are occasionally seen in the pyrite. Although the core is strongly magnetic, there is only minor megascopic magnetite. Two inch core samples were collected at twenty foot intervals and sent to Chemex Labs Ltd., North Vancouver for geochemical analysis. Each sample was pulverized, screened to a minus 80 mesh fraction, digested in nitric-perchloric acid and analysed for copper using atomic absorption spectrometry. The sample number and copper assay in parts-per-million are shown on the drill log and a copy of the Chemex analyses certificates is attached to the back of the core log. The arithmetic average of copper assays from the portion of the core where bleached zones are common (80 to 760 feet) is 300 parts-per-million as compared to the average of the remainder of the hole (0 to 80 feet and 760 to 1001 feet) at 140 parts-per-million.

In conclusion, the hole did not locate any features in the volcanics that differ from surface observations and there is no suggestion, either visually or geochemically, that the slightly higher copper background associated with the bleached zones has any economic significance.

Respectfully submitted,
ARCHER, CATHER & ASSOCIATES LTD.
A. R. Archer, B.A.Sc. P.Eng.



ARA:st

ARCHER, CATHRO
AND ASSOCIATES LTD.
CONSULTING GEOLOGICAL ENGINEERS

Box 4127, WHITEHORSE, Y.T. Y1A 3S9 667-4415

BENTALL CENTRE, VANCOUVER, B.C. 688-2568

685 TWO BENTALL CENTRE
555 BURRARD ST.
VANCOUVER, B.C.
V7X 1G4

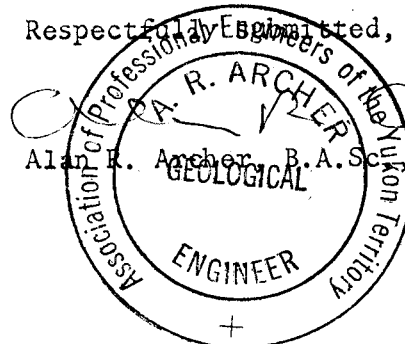
CERTIFICATE

I, Alan R. Archer, with business addresses in Whitehorse, Yukon Territory, and Vancouver, British Columbia, and residential address in South Burnaby, British Columbia, do hereby certify that:

1. I am a consulting geological engineer.
2. I graduated from the University of British Columbia with a B.A.Sc. in Geological Engineering in 1957.
3. I am a registered Professional Engineer in British Columbia and Yukon Territory.
4. From 1957 to 1966 I was engaged in mineral exploration in Canada as a geologist for a number of companies. I was Chief Geologist for United Keno Hill Mines Ltd. when I retired to private practice in 1966.
5. I have personally examined the Alp claim property.
6. I have not received, nor do I expect to receive, any interest, directly or indirectly, in the properties or securities of B.A. Copper Mines Ltd.

Respectfully Submitted,

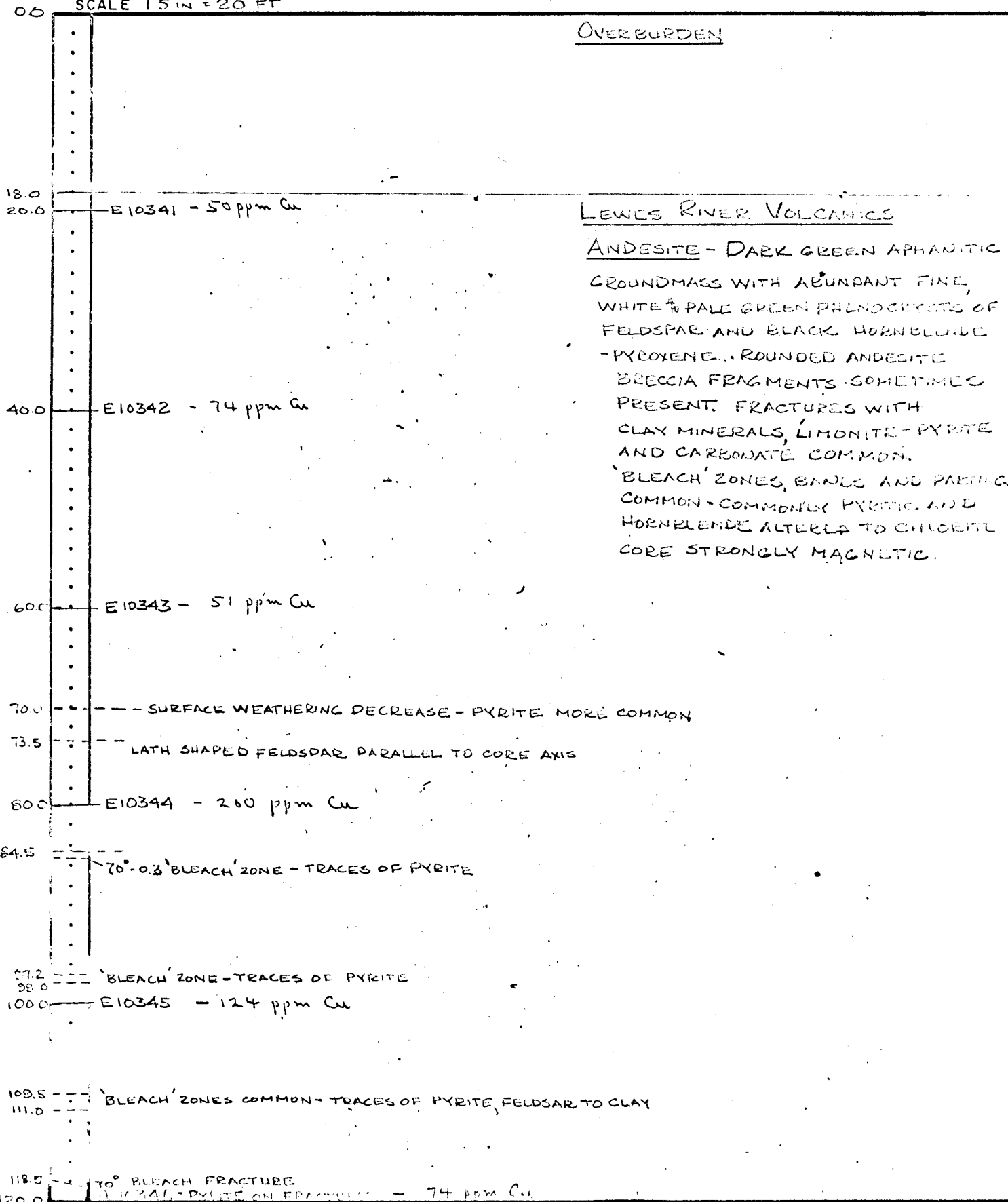
A. R. ARCHER
Alan R. Archer, B.A.Sc. P.Eng.



B.A. COPPER MINES LTD.

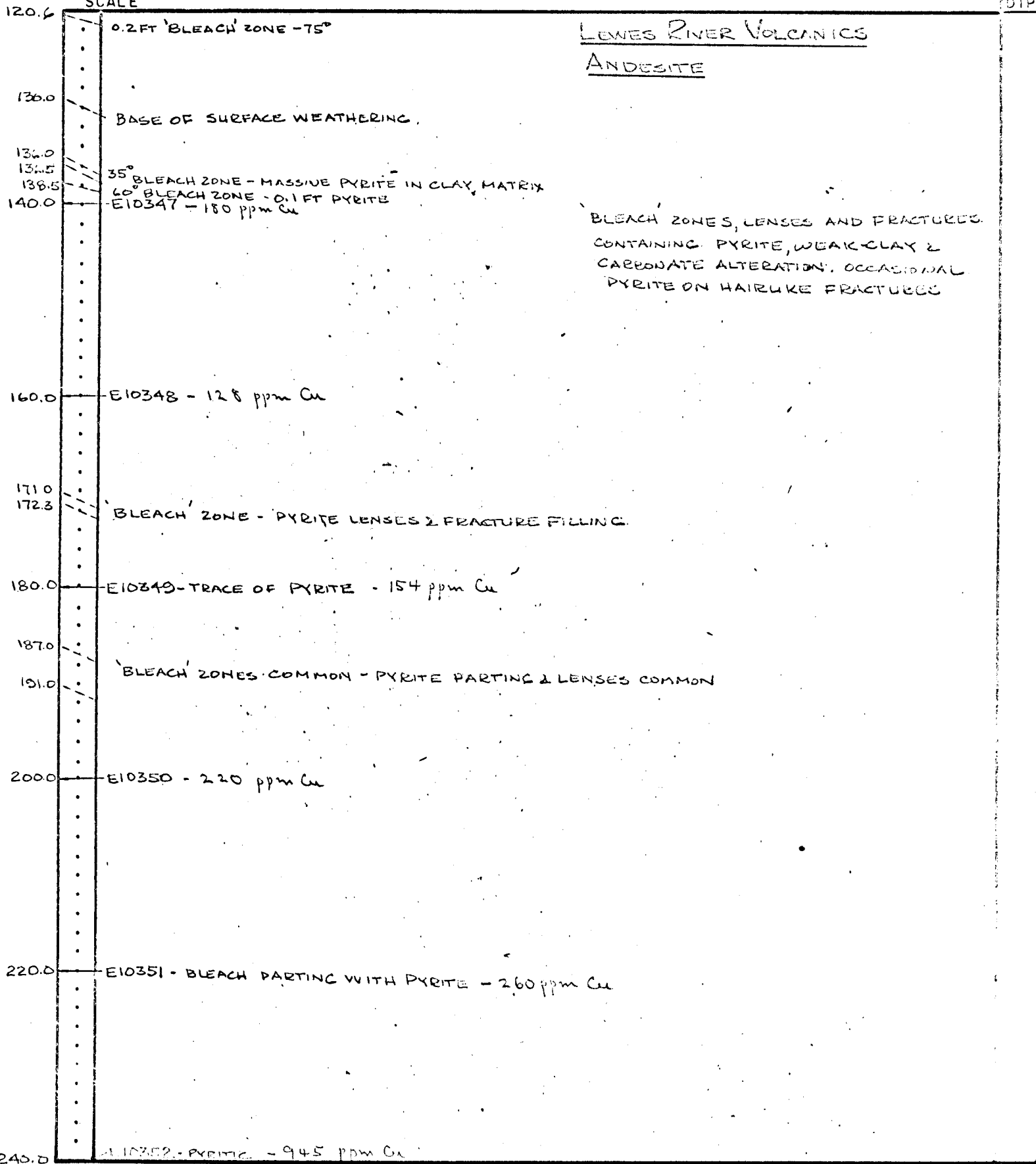
COORDINATES
ELEVATION
DIP - 50°
AZIMUTH 335°
SCALE 1.5 IN = 20 FT

CORE SIZE BQ
HOLE STARTED AUG. 31, 1973
HOLE COMPLETED SEPT. 24, 1973
LOGGED BY M.P. PHILLIPS



COORDINATES
ELEVATION
DIP
AZIMUTH
SCALE

CORE SIZE
HOLE STARTED
HOLE COMPLETED
LOGGED BY



DRILL HOLE LOG

COORDINATES
ELEVATION
DIP
AZIMUTH
SCALE

CORE SIZE
HOLE STARTED
HOLE COMPLETED
LOGGED BY

DIP

240.0
246.0
252.0
260.0
280.0
300.0
303.0
318.0
320.0
340.0
360.0

LEWES RIVER VOLCANICS
ANDESITE

BLEACH ZONE - CLAY & PYRITE COMMON

56°

E10353 - 300 ppm Cu

E10354

74 ppm Cu

PYRITE WEAKLY DISSEMINATED IN BLEACH ZONES
CLAY & CARBONATE COMMON ALONG FRACTURES

E10355 - PYRITIC - 310 ppm Cu

STRONG PYRITE VEINING &
DISSEMINATIONS

E10356 - 94 ppm Cu

'BLEACH' ZONES & BANDS NOT COMMON

E10357 - 205 ppm Cu

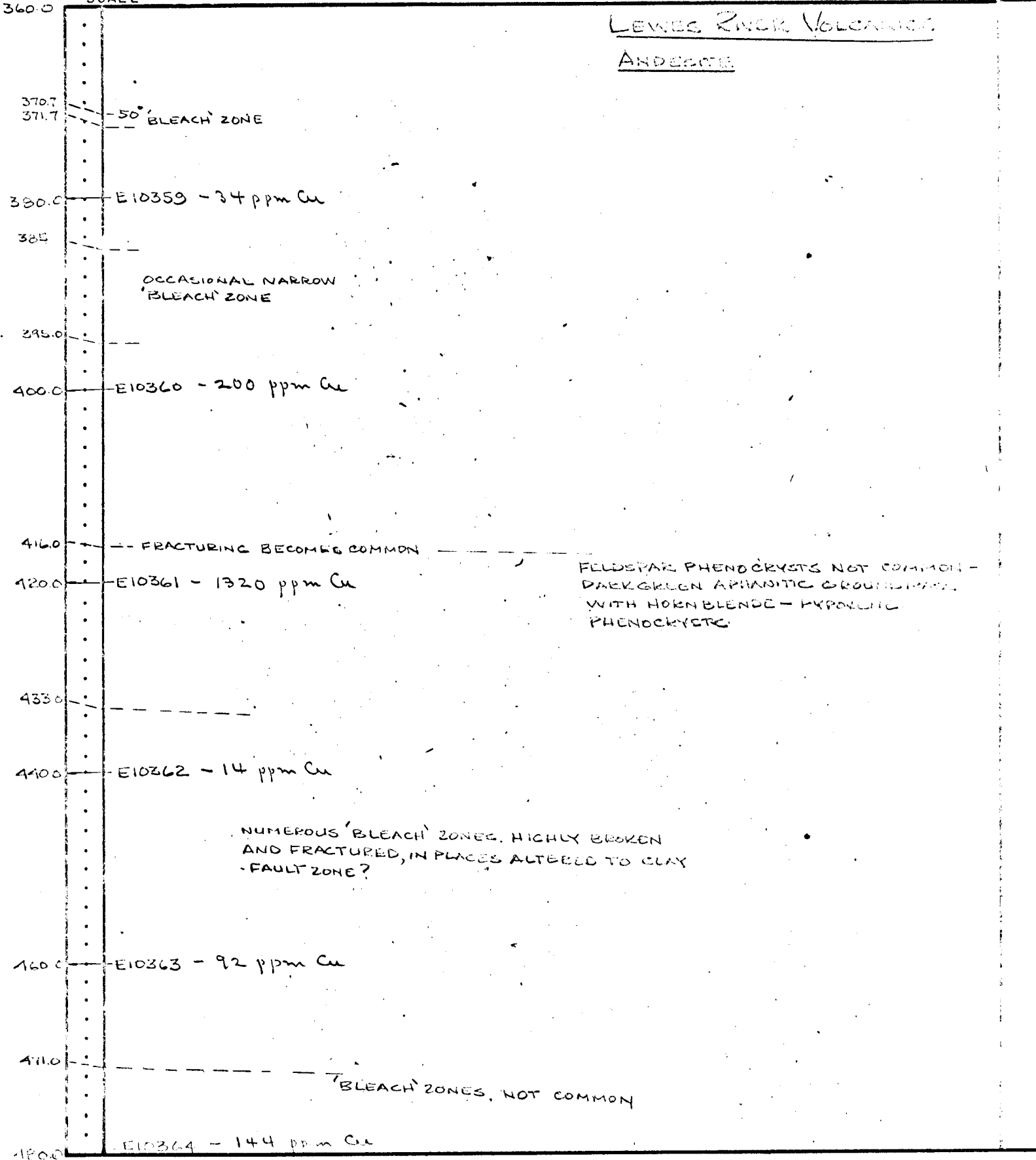
E10358 - 160 ppm Cu

COORDINATES
ELEVATION
DIP
AZIMUTH
SCALE

CORE SIZE
HOLE STARTED
HOLE COMPLETED
LOGGED BY

512

LEWIS RIVER VOLCANICS
ANDESITE



370.7
371.7 --- 50' BLEACH ZONE

380.0 --- E10359 - 34 ppm Cu

385 ---
OCCASIONAL NARROW
'BLEACH' ZONE

395.0 ---

400.0 --- E10360 - 200 ppm Cu

416.0 --- FRACTURING BECOMES COMMON

420.0 --- E10361 - 1320 ppm Cu

FELDSPAR PHENOCRYSTS NOT COMMON -
DARK GREEN APHANITIC GROUNDMASS
WITH HORNBLende - HYPOXENIC
PHENOCRYSTS

433.0 ---

440.0 --- E10362 - 14 ppm Cu

NUMEROUS 'BLEACH' ZONES. HIGHLY BROKEN
AND FRACTURED, IN PLACES ALTERED TO CLAY
- FAULT ZONE?

460.0 --- E10363 - 92 ppm Cu

471.0 --- BLEACH ZONES, NOT COMMON

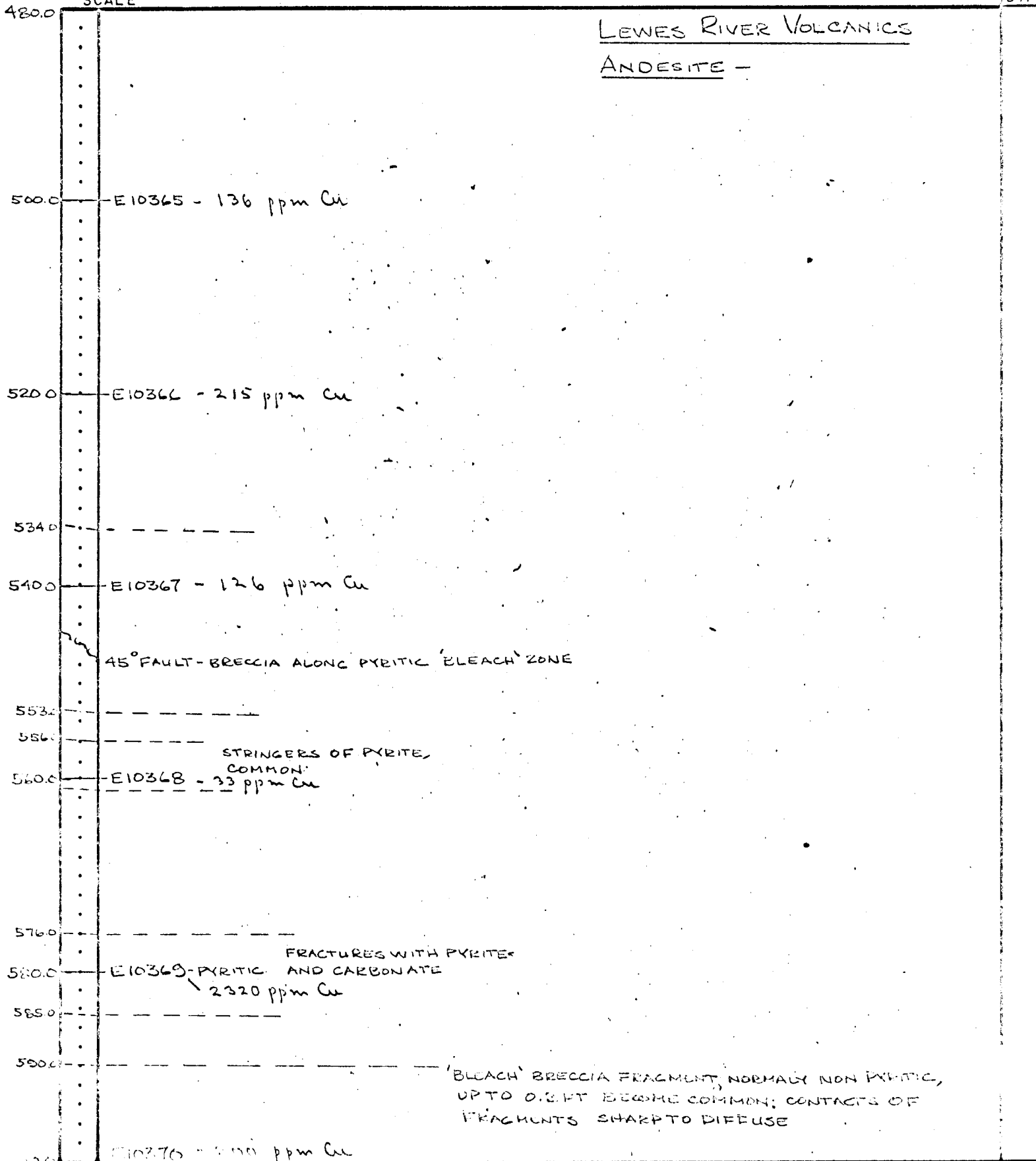
480.0 --- E10364 - 144 ppm Cu

DRILL HOLE LOG

COORDINATES
ELEVATION
DIP
AZIMUTH
SCALE

CORE SIZE
HOLE STARTED
HOLE COMPLETED
LOGGED BY

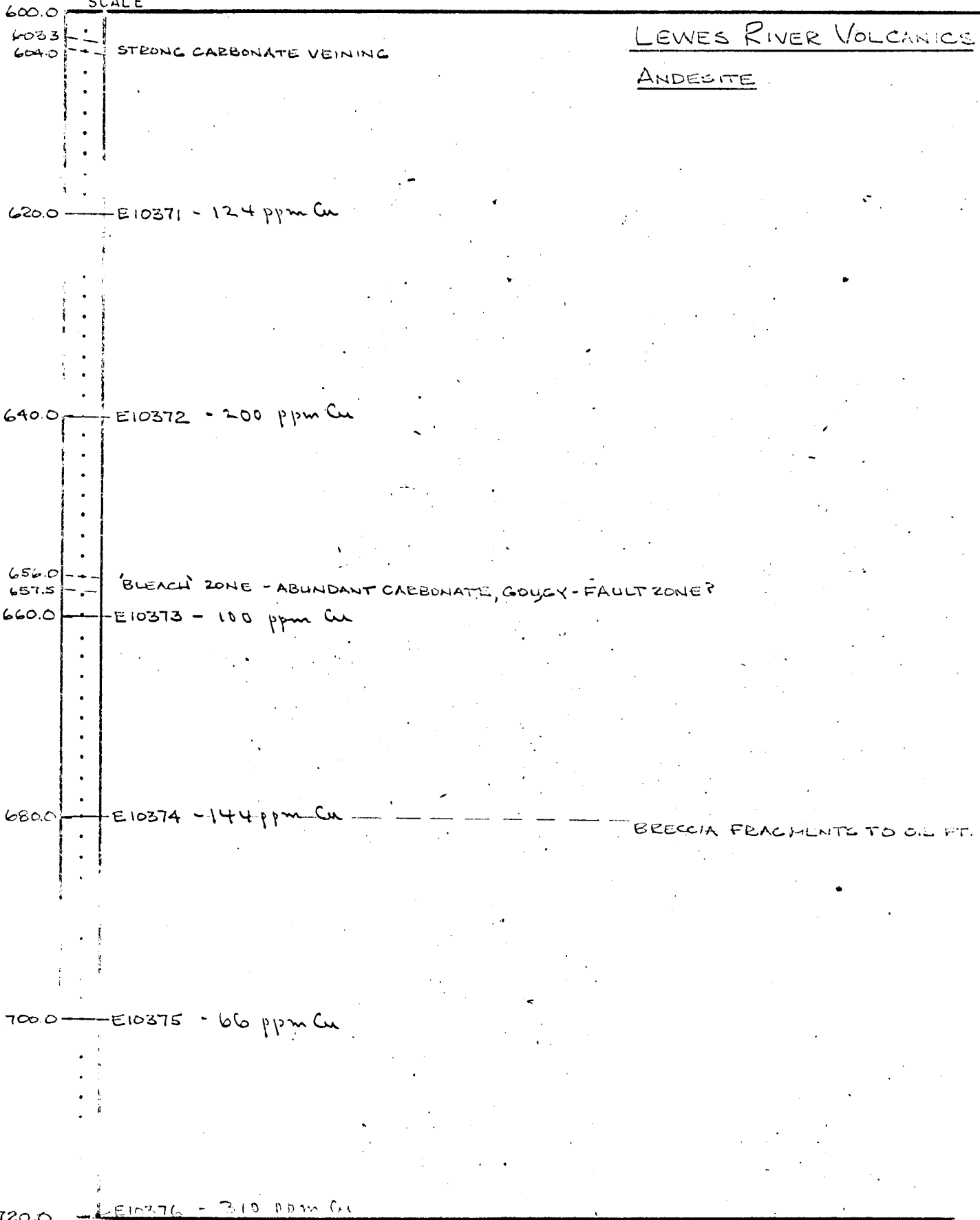
DIP



DRILL HOLE LOG

COORDINATES
ELEVATION
DIP
AZIMUTH
SCALE

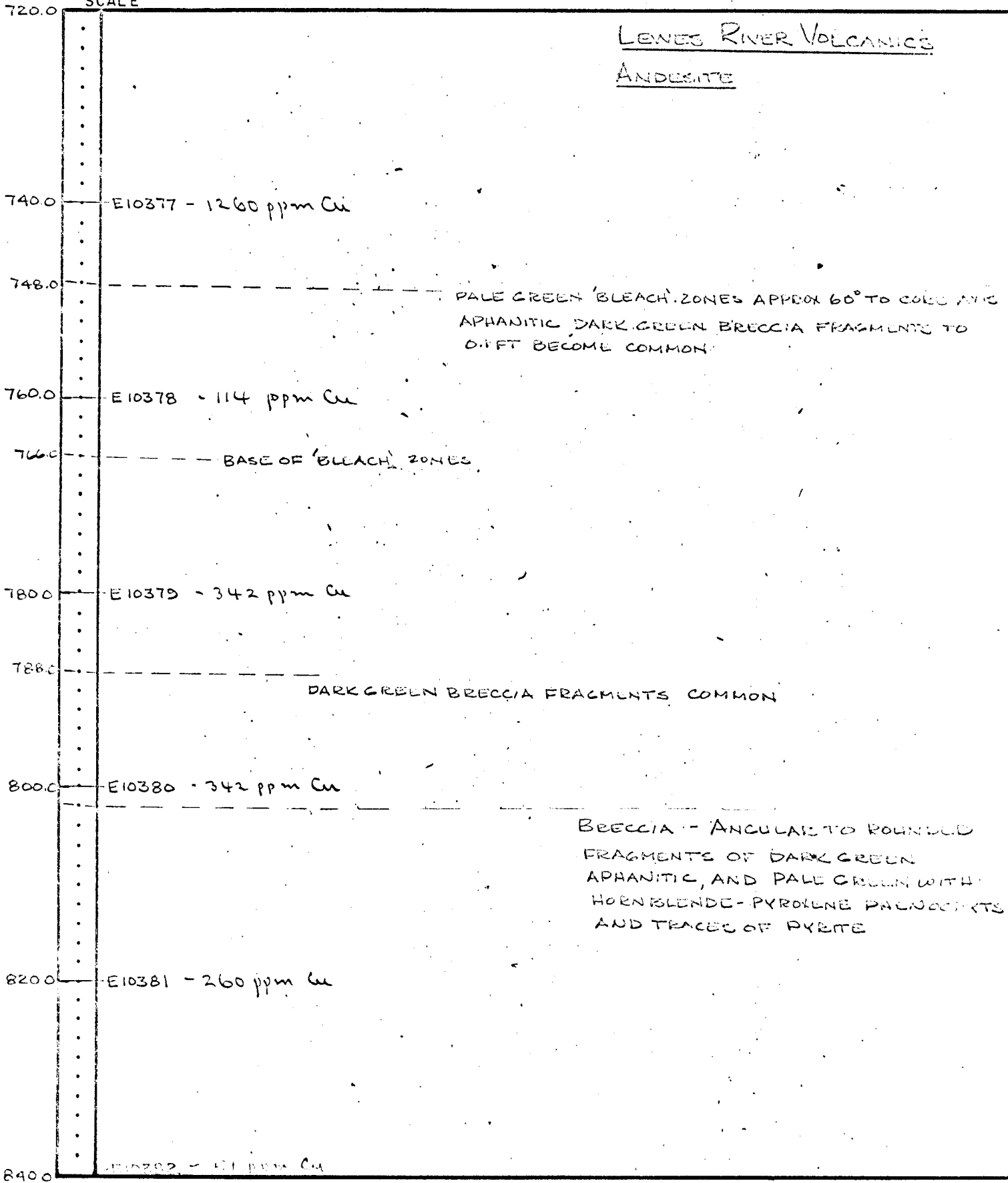
CORE SIZE
HOLE STARTED
HOLE COMPLETED
LOGGED BY



COORDINATES
ELEVATION
DIP
AZIMUTH
SCALE

CORE SIZE
HOLE STARTED
HOLE COMPLETED
LOGGED BY

DIP



DRILL HOLE LOG

COORDINATES
ELEVATION
DIP
AZIMUTH
SCALE

CORE SIZE
HOLE STARTED
HOLE COMPLETED
LOGGED BY

D.P.

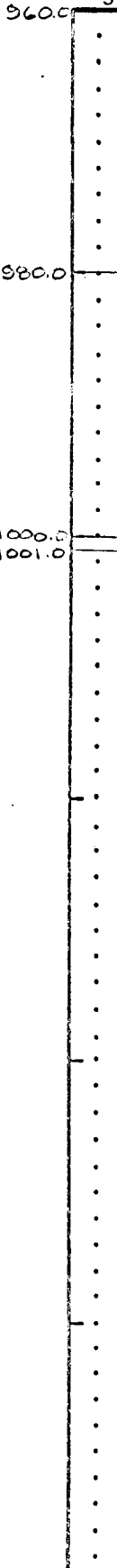
LEWES RIVER VOLCANICS
ANDESITE.

Elevation	Sample ID	Cu Concentration (ppm)
860.0	E10383	146
880.0	E10384	141
900.0	E10385	164
920.0	E10386	74
940.0	E10387	86
960.0	E10388	78

DRILL HOLE LOG

COORDINATES
ELEVATION
DIP
AZIMUTH
SCALE

CORE SIZE
HOLE STARTED
HOLE COMPLETED
LOGGED BY



LEWES RIVER VOLCANICS
ANDESITE -

980.0 — E10389 - 180 ppm Cu

1000.0 — E10390 - 68 ppm Cu
1001.0 — END OF HOLE

Excellent recovery throughout
→



CHEMEX LABS LTD.

177 BROADBANK AVE.
NORTH VANCOUVER, B.C.
CANADA
TELEPHONE: 985-0648
AREA CODE: 604

• ANALYTICAL CHEMISTS • GEOCHEMISTS • REGISTERED ASSAYERS

CERTIFICATE OF ANALYSIS

CERTIFICATE NO. 26743

TO: Archer Cathro & Assoc. Ltd.,
Ste. 685 Two Bentall Centre
Vancouver, B. C.

INVOICE NO. 11048

RECEIVED Jan. 7/74

ANALYSED Jan. 9/74

ATTN: Mr. A. Archer (B.A. Copper)

SAMPLE NO. :	PPM Copper	Rock Geochem
E 10341	50	
10342	74	
10343	51	
10344	200	
10345	124	
10346	74	
10347	180	
10348	128	
10349	154	
10350	220	
10351	260	
10352	945	
10353	300	
10354	74	
10355	310	
10356	94	
10357	205	
10358	160	
10359	34	
10360	200	
10361	1320	
10362	14	
10363	92	
10364	144	
10365	136	
10366	215	
10367	126	
10368	33	
10369	2320	
10370	200	
10371	124	
10372	200	
10373	100	
10374	144	
10375	66	
10376	310	
10377	1260	
10378	114	
10379	342	
10380	342	
Std.	46	



MEMBER
CANADIAN TESTING
ASSOCIATION

CERTIFIED BY:

PK Swates



CHEMEX LABS LTD.

175 WILSON AVENUE
NORTH VANCOUVER, B.C.
CANADA
TELEPHONE: 985-0648
AREA CODE: 604

- ANALYTICAL CHEMISTS
- GEOCHEMISTS
- REGISTERED ASSAYERS

CERTIFICATE OF ANALYSIS

TO: Archer Cathro & Assoc. Ltd.,
Ste. 685 Two Bentall Centre
Vancouver, B. C.

CERTIFICATE NO. 20744
INVOICE NO. 11048
RECEIVED Jan. 7/74
ANALYSED Jan. 9/74

ATTN: Mr. A. Archer *(B.A. Copper)

SAMPLE NO. :	PPM Copper	Rock Geochem
E 10381	260	
10382	51	
10383	146	
10384	141	
10385	164	
10386	74	
10387	86	
10388	78	
10389	180	
E 10390	68	
246 (STANDARD)	690	



MEMBER
CANADIAN TESTING
ASSOCIATION

CERTIFIED BY: *B. Lewites*