

GEOCHEMICAL SURVEY

ON

THE SAND 1 - 24 CLAIM GROUP

FOR

BLACK GIANT MINES LTD. (N.P.L.)

Watson Lake Mining Division, Yukon Territory

Latitude 62 Degrees 26 Minutes North

Longitude 129 Degrees 15 Minutes West

Claim Map 105 I - 6

BY

Robert W. Nusbaum

Geologist



January 25th, 1974

This report has been examined by the Geological Evaluation Unit and is recommended to the Commissioner to be considered as representation work in the amount of \$ 2878.89

[Signature]
 Resident Geologist or
 Resident Mining Engineer

Considered as representation work under Section 53 (4) Yukon Quartz Mining Act.

[Signature]
 Commissioner of Yukon Territory



TABLE OF CONTENTS

INTRODUCTION	PAGE I
CONCLUSIONS	PAGE I
RECOMMENDATIONS	PAGE I
PERSONNEL	PAGE II
PROPERTY	PAGE II
LOCATION & ACCESS	PAGE II
TOPOGRAPHY	PAGE II
SOIL SAMPLING PROGRAM	PAGE III
SURVEY RESULTS	PAGE III IV
APPENDIX	REAR
LOCATION MAP	REAR
CLAIM GRID MAP 1" to 2,000'	REAR
GEOCHEMICAL MAP 1" to 500'	POCKET
CLAIM MAP 1" to 1,000'	POCKET

GEOCHEMICAL SURVEY
FOR
BLACK GIANT MINES LTD. (N.P.L.)
ON
THE SAND 1 - 24 CLAIM GROUP
WATSON LAKE MINING DIVISION, YUKON TERRITORY

Introduction

Black Giant Mines Ltd. (N.P.L.) acquired the SAND claim group in February, 1973, and upon recommendation in a Geological Report on the Property by the Company's Consulting Engineer, a Geochemical Survey was conducted on the claim group by Newcastle Explorations, Vancouver, B.C. in August, 1973. The results of the Geochemical Survey were plotted, contoured and evaluated by the author of this report on December, 1973.

Conclusions

One small area approximately 1,000 feet long containing 3 anomalous values ranging from 482 to 1,235 parts per million in zinc was found in the northern part of the claim group. In the southern part of the Property, three rock samples contained anomalous values in Cu, Pb, Zn and Ag, however, the soil samples in this area did not reflect any anomalous conditions, thus leading to the conclusion that either the rocks and/or the soils were transported.

Recommendations

The anomalous rock samples should be investigated by prospecting and detailed geochemical soil sampling to determine the source. Although not of major significance, the area outlined by anomalous zinc values in the northern part of the Property could be followed up using the same methods at the same time.

Personnel

NEWCASTLE EXPLORATION'S SURVEY CREW

Larry Sostad	Vancouver, B.C.
Garry Baker	Vancouver, B.C.
Jack Bradley	Vancouver, B.C.
David Munns	Vancouver, B.C.

Property

The Property consists of 24 claims recorded on February 9th, 1973, Claim Map 105 I - 6. The following is a list of the Claims and their Grant Numbers.

<u>Name of Claim</u>	<u>Grant Number</u>
SAND 1 - 24	Y 72388 - Y 72411

Location & Access

The Property is located about 3 miles north-east of Summit Lake, Latitude 62 degrees 24 minutes north; Longitude 129 degrees 16 minutes west, Claim Map 105 I - 6, Watson Lake Mining Division, Yukon Territory.

Access to the Property is by fixed wing aircraft to Summit Lake, then by helicopter to the Property or, by helicopter directly to the Property from Ross River or Watson Lake.

Topography

The SAND claim group is situated on a plateau, moderately steep in the northern part. The eastern part is covered with thick brush and small spruce trees.

Soil Sampling Program

Two baselines were cut and measured, and a grid pattern was laid out on the claim group with lines at 400 feet spacings and stations at 200 feet intervals. Soil samples were collected from the top of the "B" soil horizon with a hand auger. The soil samples were packaged in manilla envelopes, code-marked with a number for identification and sent to Loring Laboratory, Calgary, Alberta for lead-zinc analysis. The samples were screened to minus 80 mesh, digested in aqua regia and analysed for lead and zinc using the Atomic Absorption Method.

Survey Results

Approximately 625 sample results for lead-zinc analysis were received and plotted on maps at a scale of 1 inch to 500 feet for contouring and interpretation. A statistical analysis of the results shows an average background of 15 parts per million in lead. No lead values were found to fall into the anomalous category, that is three times background, in this case 45 parts per million.

Average background zinc values are 142 parts per million with values of 426 parts per million falling into the anomalous category, (i.e. three times background.)

Contouring the geochemical results of samples with values greater than 400 parts per million zinc outlined an area approximately 1,000 feet long containing three samples with values ranging from 482 to 1,235 parts per million. Nine other one sample or two sample anomalies are outlined widely scattered over the northern half of the claim group.

Three rock samples collected at the south end of line 56W, Grid U-2, contained the following values in parts per million:

<u>Sample Number</u>	<u>Cu</u>	<u>Pb</u>	<u>Zn</u>	<u>Ag</u>
1	1,560	1,080	28,300	24.0
2	790	510	15,550	13.6
3	1,140	400	19,500	15.1

These rock samples show anomalous values in Cu, Pb, Zn and Ag, however, the soil samples collected in this area do not reflect any anomalous conditions. This could indicate that the rock samples were transported from another area, or possible the soils are of glacial origin and mask the bedrock values. In either case the rock values are anomalous and should be investigated by prospecting and detailed geochemical soil sampling in the area. The three anomalous soil samples found in the northern part of the property, although not of major significance could be followed up at the same time.

Vancouver, B.C.
January 28th, 1974

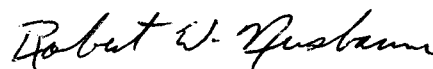
Robert W. Nusbaum
Robert W. Nusbaum
Geologist

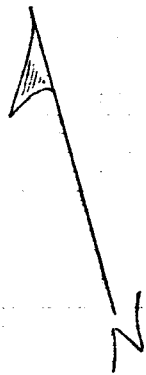
CERTIFICATE OF QUALIFICATIONS

I, Robert W. Nusbaum do hereby certify that:

1. I am a practising Consulting Geologist with residence at 660 Chatsworth Road, Richmond, B.C.
2. I am a graduate of the University of Idaho with a Bachelor of Science Degree in Geology.
3. I have been practising my profession since 1959.
4. The accompanying Report is based on analytical data received from Loring Laboratory Calgary, Alberta; information from the Contractor, Newcastle Explorations and personal experience in Yukon Territory.
5. I have no interest in the Property nor in the securities of Black Giant Mines Ltd., nor do I expect to receive any.

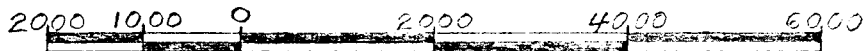
Vancouver, B.C.
January 28th, 1974


Robert W. Nusbaum
Geologist



24	22	20	18	16	14
23	21	19	17	15	13
12	10	8	6	4	2
11	9	7	5	3	1

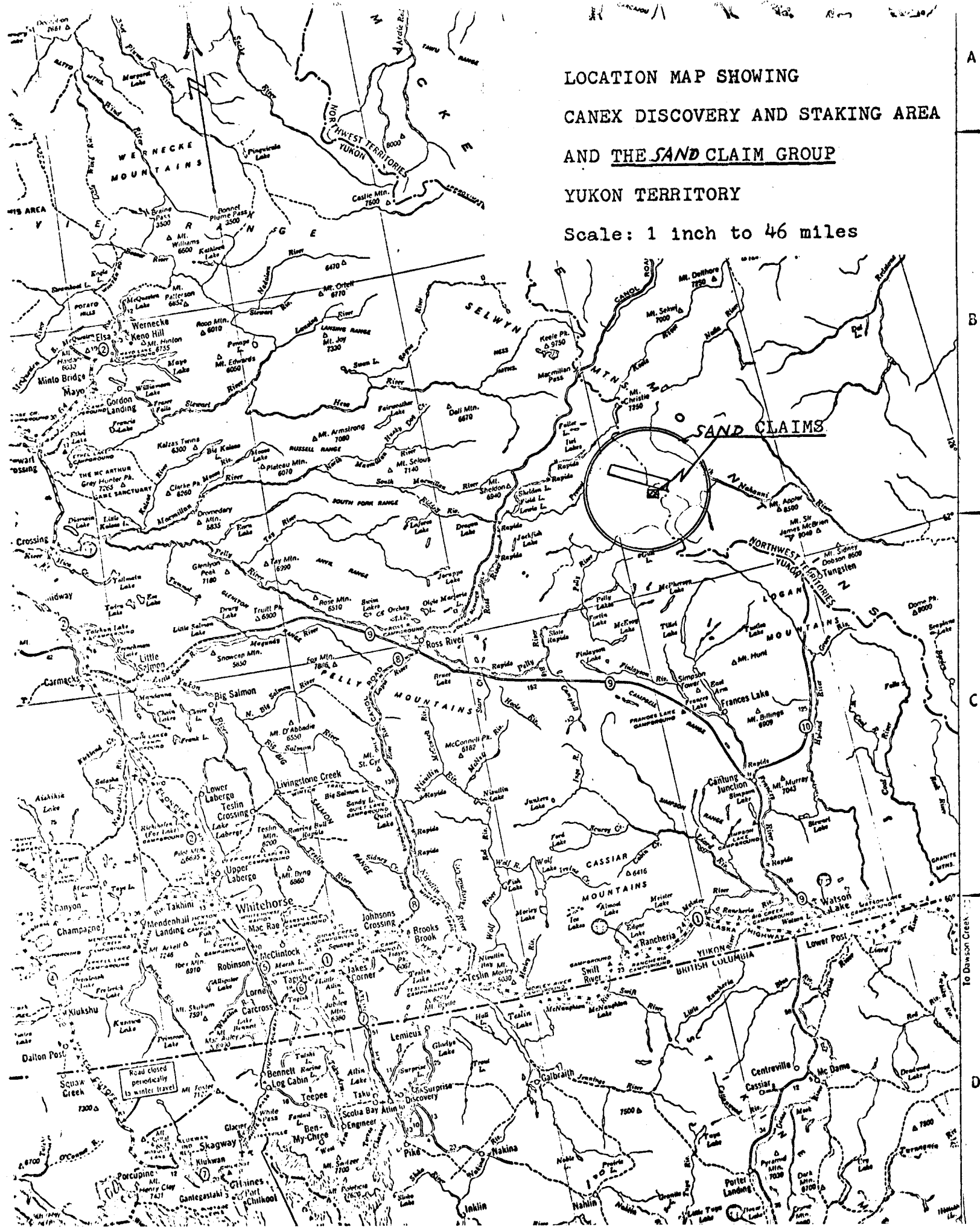
Black Giant Mines Ltd.
SAND 1-24 Claim Group
Yukon Territory 105 I-6
Geochem Grid 400' line spacing, 200' stations
scale 1" to 2000' November, 1973 R.W.N.



LOCATION MAP SHOWING
CANEX DISCOVERY AND STAKING AREA
AND THE SAND CLAIM GROUP

YUKON TERRITORY

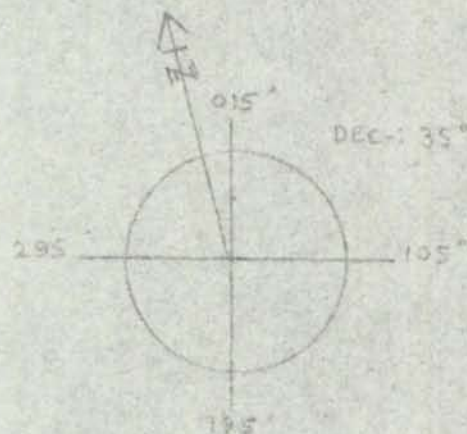
Scale: 1 inch to 46 miles



CLAIM SURVEY

SAND #1-24

Black Giant Mines Ltd. (NPL)



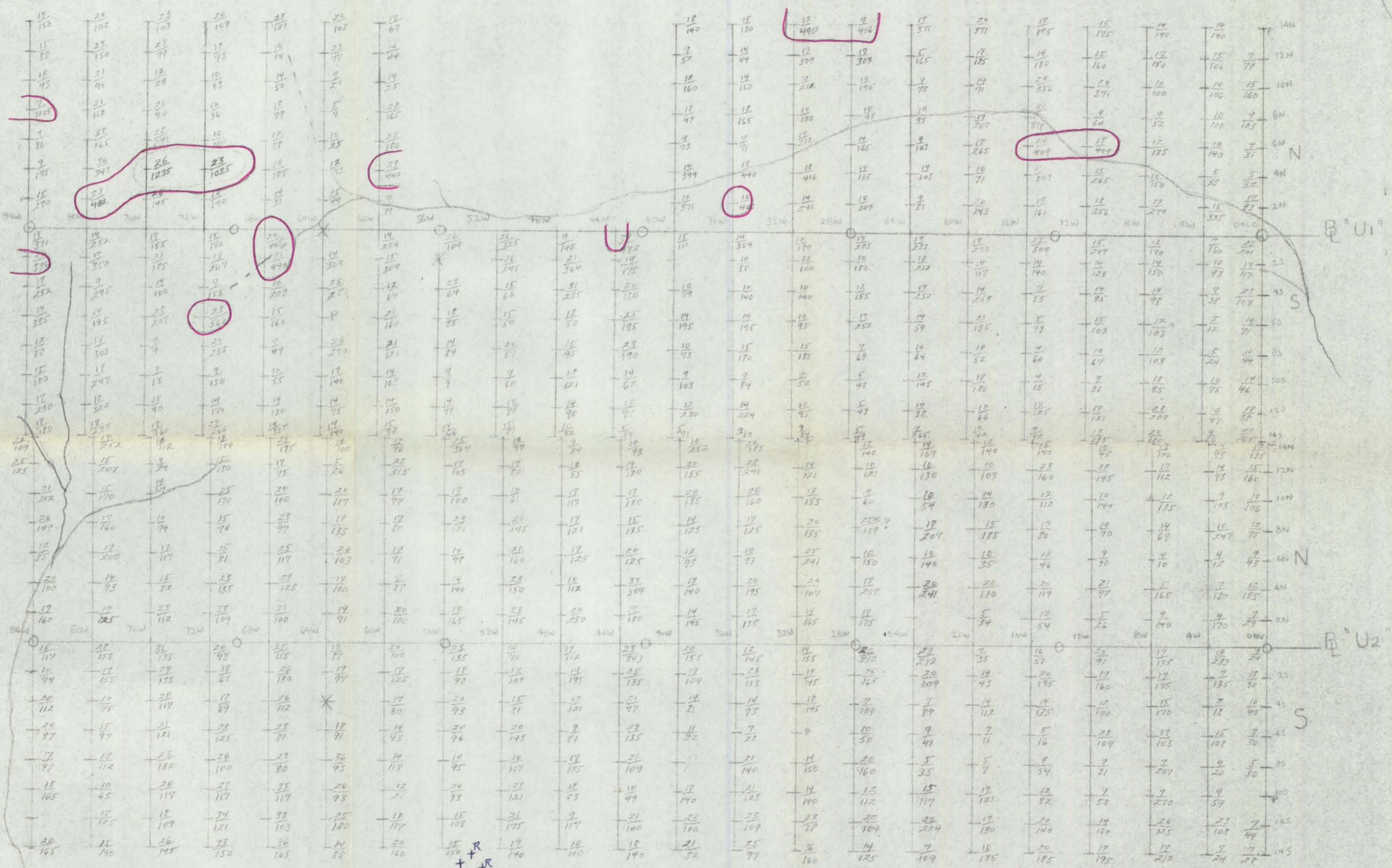
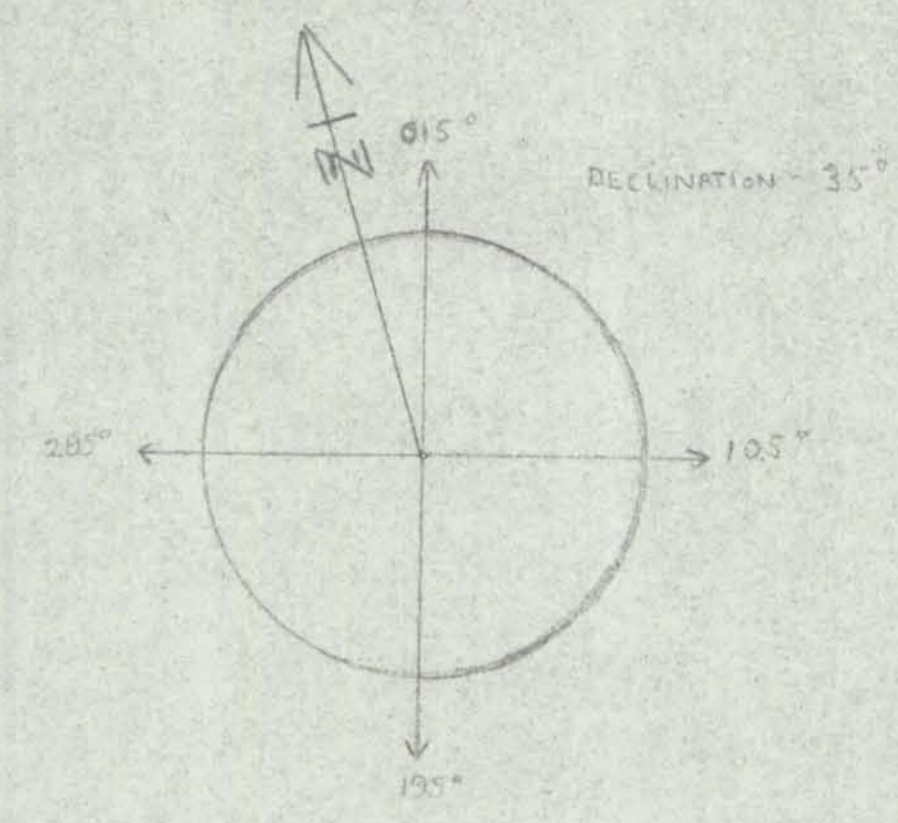
24	22	20	18	16	14	PAM #1
23	21	19	17	15	13	PAM #2
12	10	8	6	4	2	
11	9	7	5	3	1	
LIT #1	LIT #3	LIT #5	LIT #7	LIT #9		

Note: Dashed lines on the grid indicate a specific claim boundary. The boundary starts at grid cell (20, 18) and proceeds through (18, 18), (18, 17), (17, 17), (17, 16), (16, 16), (16, 15), (15, 15), (15, 14), (14, 14), (14, 13), (13, 13), (13, 12), (12, 12), (12, 11), (11, 11), (11, 10), (10, 10), (10, 9), (9, 9), (9, 8), (8, 8), (8, 7), (7, 7), (7, 6), (6, 6), (6, 5), (5, 5), (5, 4), (4, 4), (4, 3), (3, 3), (3, 2), (2, 2), (2, 1), (1, 1), (1, 0), (0, 0), (0, 1), (1, 1), (1, 2), (2, 2), (2, 3), (3, 3), (3, 4), (4, 4), (4, 5), (5, 5), (5, 6), (6, 6), (6, 7), (7, 7), (7, 8), (8, 8), (8, 9), (9, 9), (9, 10), (10, 10), (10, 11), (11, 11), (11, 12), (12, 12), (12, 13), (13, 13), (13, 14), (14, 14), (14, 15), (15, 15), (15, 16), (16, 16), (16, 17), (17, 17), (17, 18), (18, 18), (18, 19), (19, 19), (19, 20), (20, 20), (20, 19), (20, 18).

GEO-CHEMICAL SURVEY

SAND #1-24 MINERAL CLAIMS

Black Giant Mines Ltd. (N.P.L.)



Rock	#1	#2	#3
Pb	1080	510	400
Zn	28300	15500	19500
Hg	24.0	13.6	15.1
Cu	1560	790	1140

Scale 1" to 500'

Geochemical Values in parts per million $\frac{Pb}{Zn}$

Contours Outline Values Greater Than 400 p.p.m. Zinc

Average Background Value 15 ppm Pb; 142 p.p.m. Zn

Data plotted, contoured and evaluated by R.W. Nusbaum December, 1973

LEGEND

--- * --- SAMPLE MISSING

--- P --- PERMA-FROST

--- O --- CLAIM POST

LRWS