

TABLE OF CONTENTS

	<u>Page No.</u>
Location	1
Geology	1
Geochemical Survey	1 & 2
Cost of Survey	3

Maps

Geochemical Survey of Tom Claims

This report has been examined by
the Geological Evaluation Unit
and approved as to technical worth by:

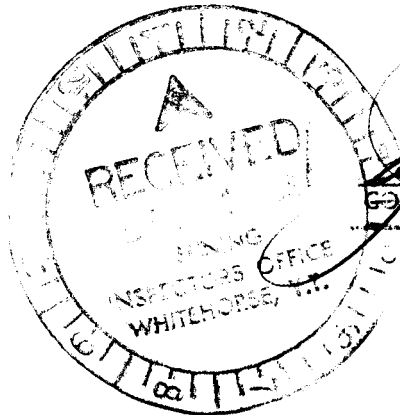
D.C. Findley
RESIDENT GEOLOGIST

and approved as to cost in the amount of

\$1900.00
R.G. Neelken
RESIDENT MINING ENGINEER

and approved as representation work
under Section 53(4) Yukon Quartz
Act.

[Signature]
COMMISSIONER OF YUKON



Location

The Tom Claims under consideration lie to the south and west of the leased Tom group. All Tom Claims in the area are wholly owned by Hudson Bay Exploration and Development Company Limited of Winnipeg, Manitoba.

More specifically they are in the MacMillan Pass area, latitude 63°10', longitude 130°09', claim sheet 105-0-1. See accompanying map.

Geology

The area is underlain by relatively flat lying argillite, dark grey to grey in color. Locally siltstone occurs interbedded with the argillite. These sediments are believed to be Devonian in age. (G.S.C. map 8-1967). Strike of the beds is roughly east-west to northeast-southwest.

Geochemical Survey

August 16 and 17, 1968, E. Madarash and E. Arsenault of Flin Flon, Manitoba, employees of Hudson Bay Exploration and Development Company Limited carried out detailed geochemical sampling of the drainage system on Tom 168, 169, 170 and 171 mineral claims. In all 182 samples were collected.

Samples were taken at fairly regular intervals in creeks from active sediments. All samples collected were sent to the Research Department of Hudson Bay Mining and Smelting Co., Limited at Flin Flon, Manitoba. Samples were crushed, pulverized and determinations made for five elements, silver, copper, lead, zinc and molybdenum on a Jarrel Ash Emission Spectrograph. Assay results are plotted in parts

per million on a base map prepared from aerial photographs and claim sheet 105-0-1 (accompanying map).

Scattered values above background in copper and zinc are considered to be erratics.

No further work is recommended on this particular creek system at the present time.



R. T. McIntosh.

Approved:




R. L. Price, Prof. Engineer
Manitoba and Saskatchewan

Costs Involved in Geochemical Survey
of Drainage System

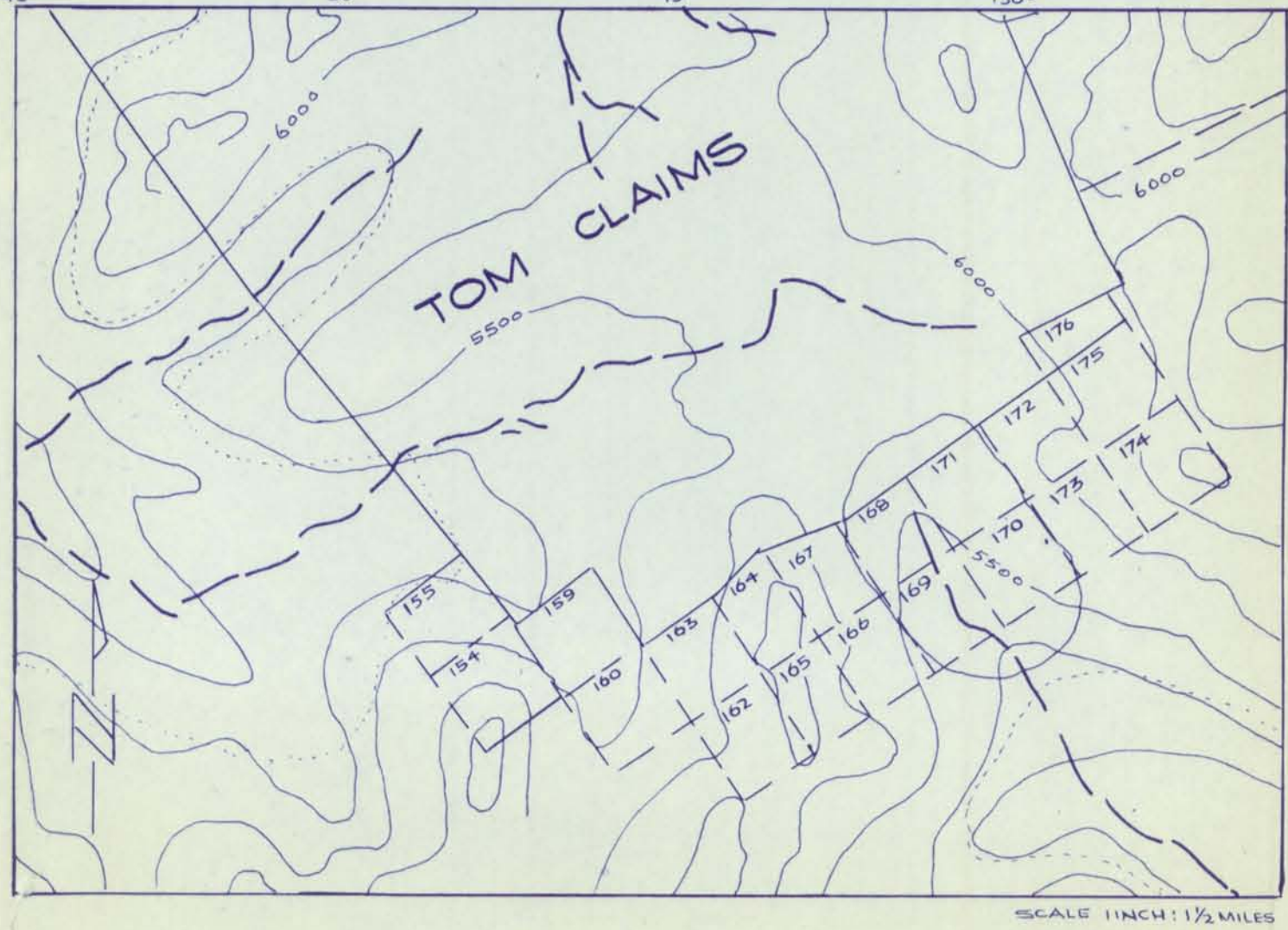
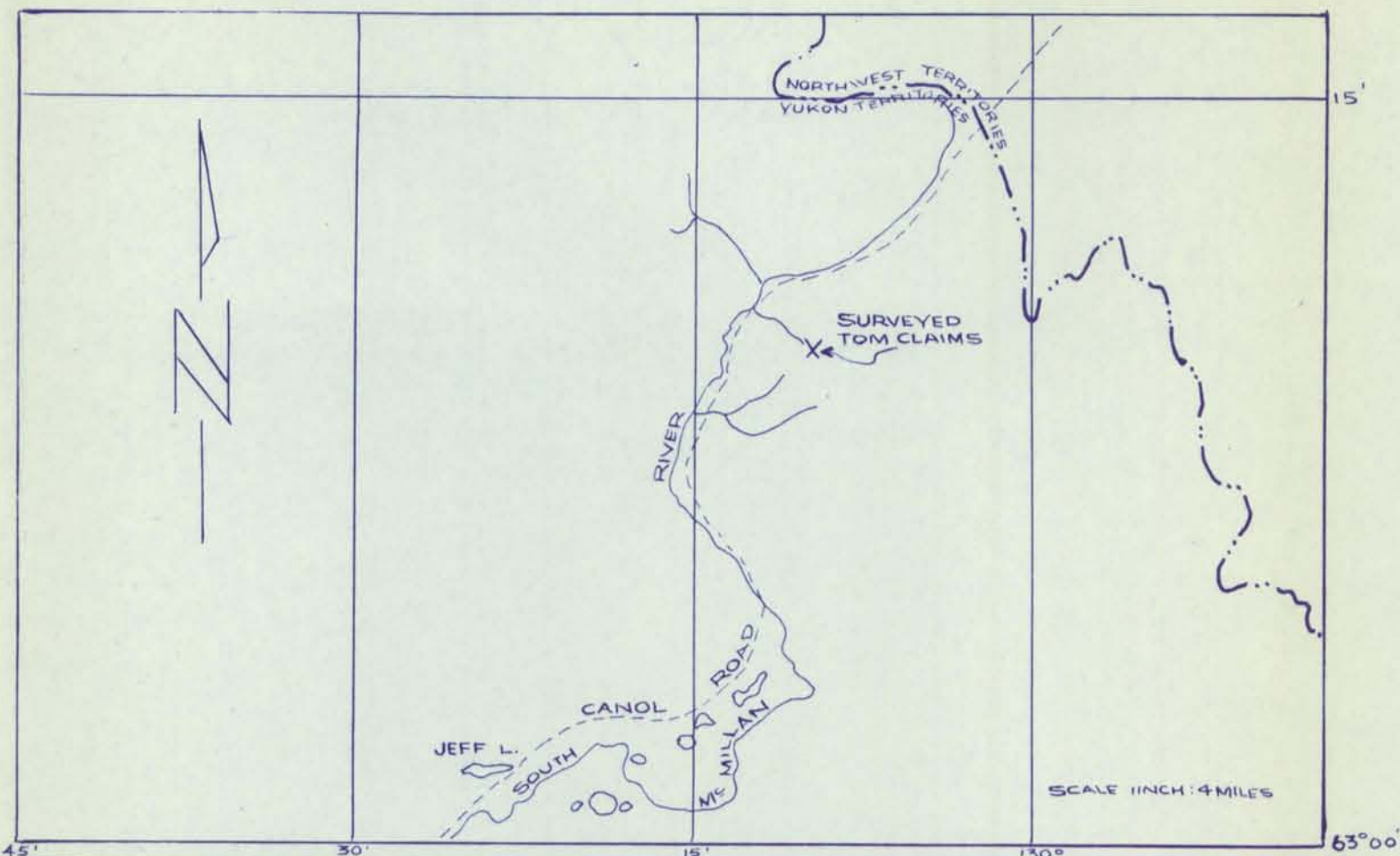
Tom 168, 169, 170 & 171 Claims

Wages	\$ 70.66	
Camp Operation	44.32	
Supervision	25.00	
Assaying 182 samples, 5 determinations at \$0.75 per determination	<u>682.50</u>	\$822.48
Add 25% Overhead		205.62
Helicopter 4 hours at \$219.65 per hour		<u>878.60</u>
TOTAL		\$1,906.70

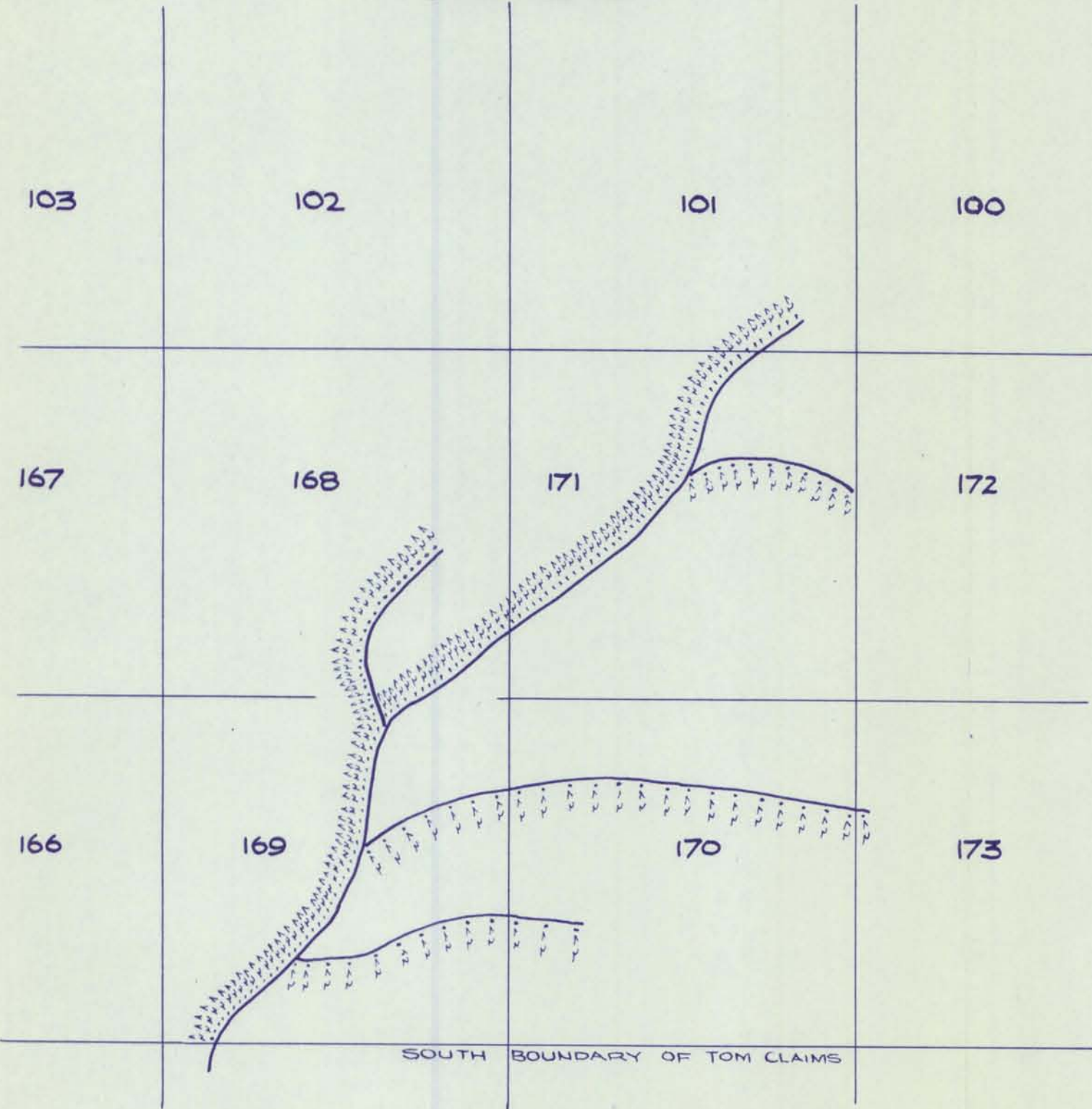
Certified Correct:



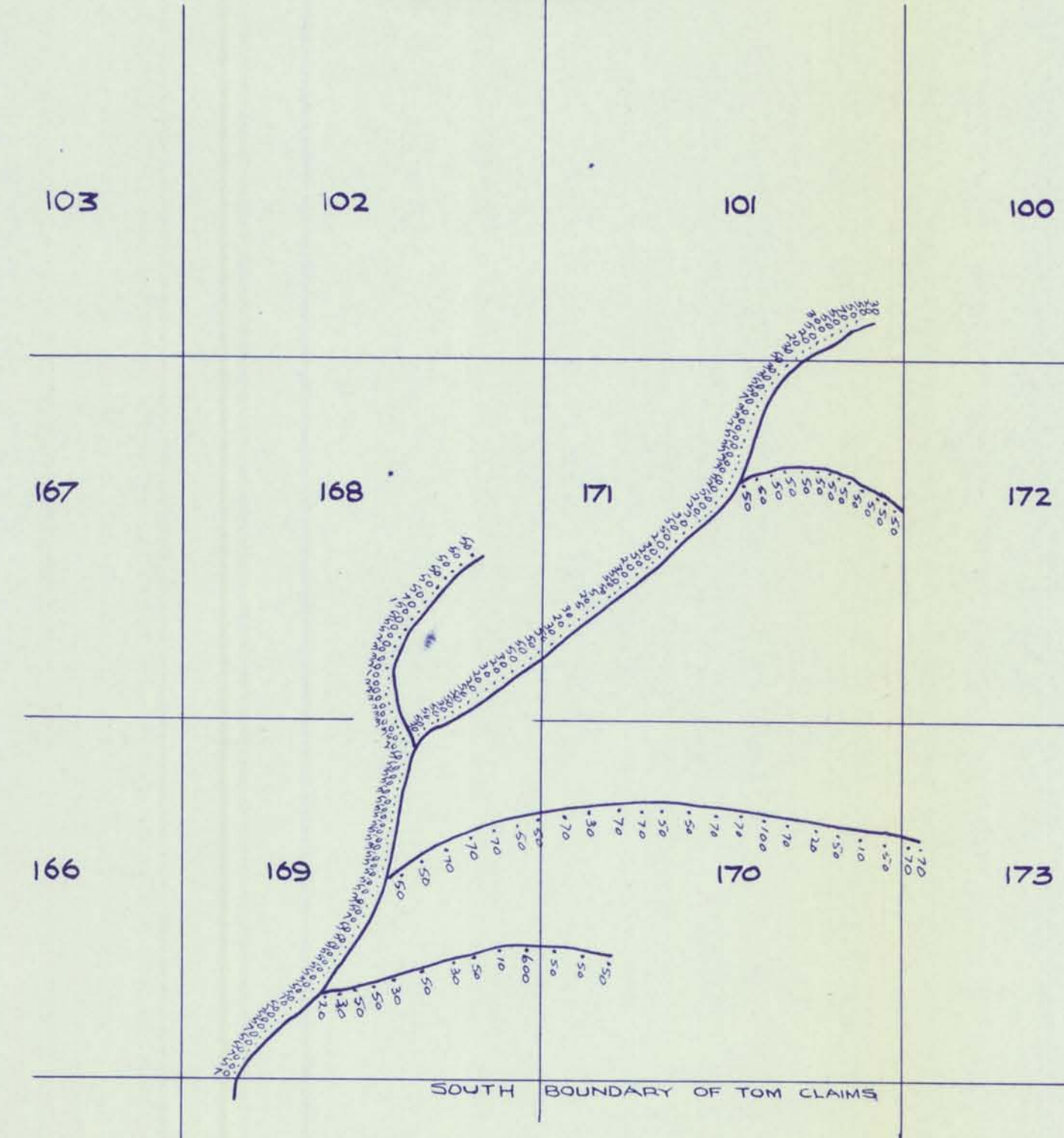




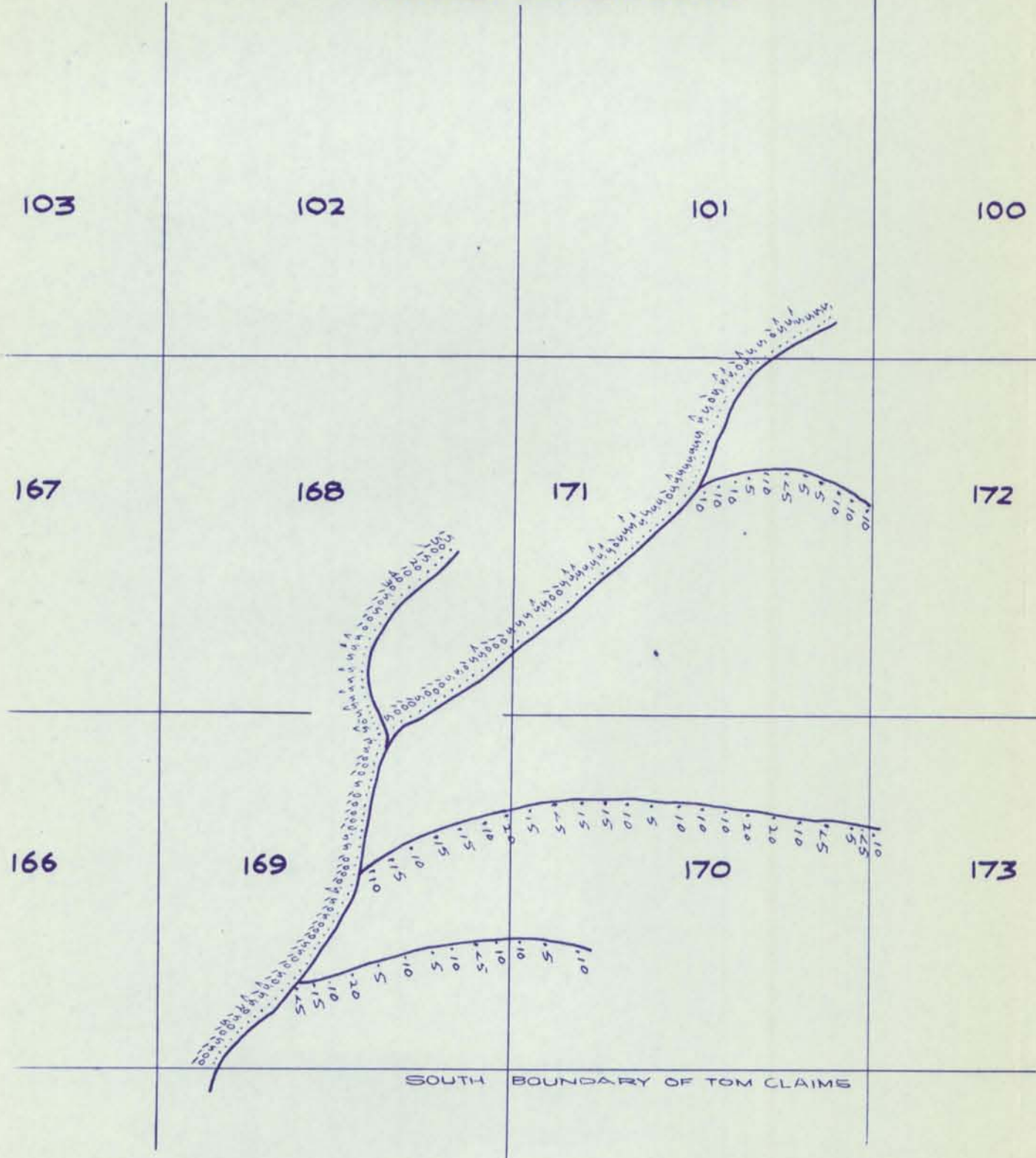
SILVER



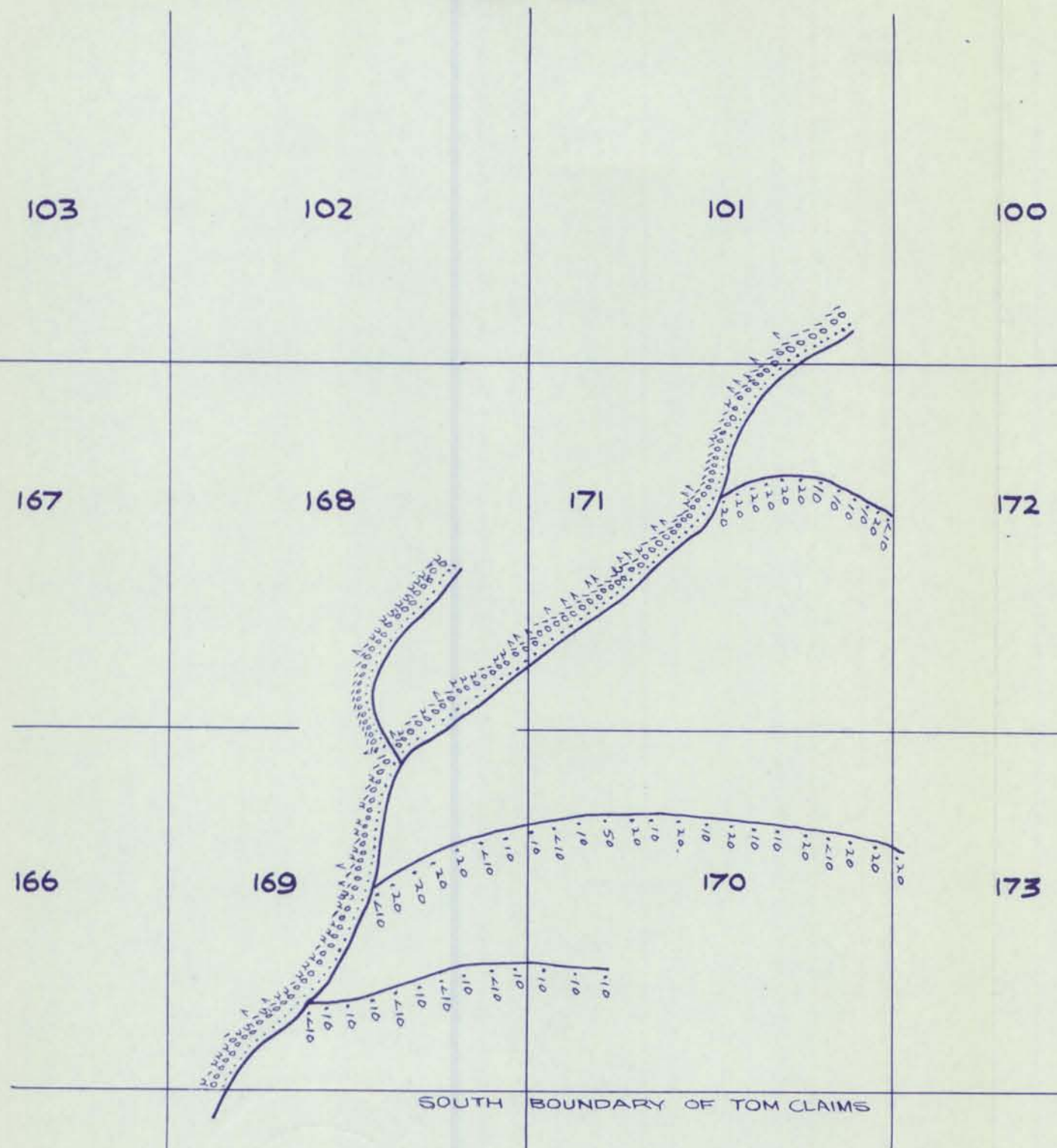
COPPER



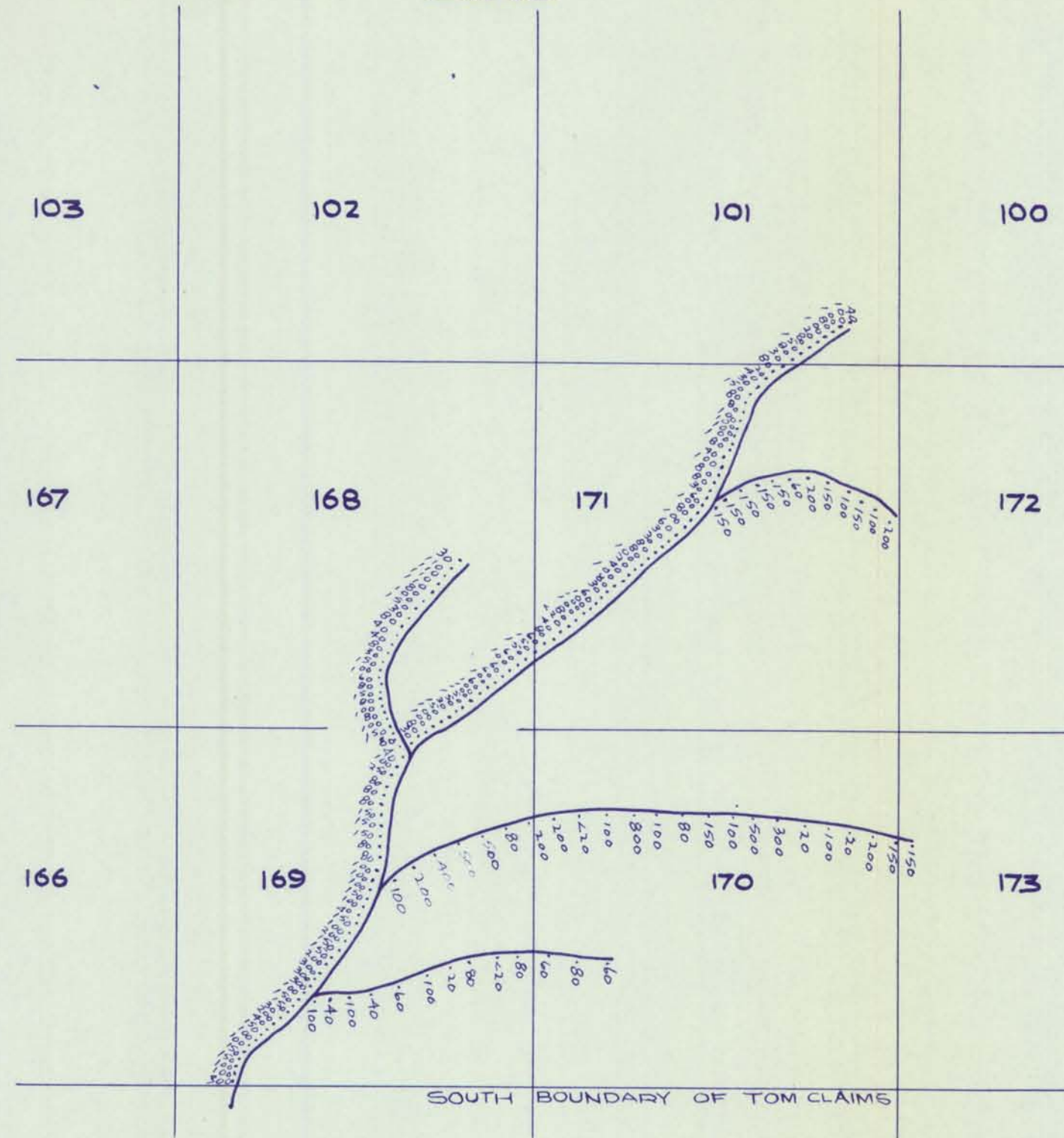
MOLYBDENUM



LEAD



ZINC



SCALE 1 INCH = 600 FT

HUDSON BAY EXPLORATION & DEVELOPMENT Co.

GEOCHEM SURVEY
ASSAYS IN P.P.M.

FLIN FLON MANITOBA

SCALE AS SHOWN