

ASSESSMENT REPORTS

060527

MAP No. 105-D-11, TYPE OF WORK: Geol, Geophy, Geochem

REPORT FILED UNDER	Whitehorse Copper Mines Ltd.	
DATE PERFORMED	1973	DATE FILED: June 1973.
LOCATION - LAT.	60° 46'N	Whitehorse area, Yukon
LONG	135° 11'W	
CLAIM Nos	WE Op, WE 19-34, Y 66018-9, Y66024, Y66031, Y66068-75	
WORK DONE BY	D. Tenney, V.V. Jutovich	
WORK DONE FOR	Whitehorse Copper Mines Ltd.	
REMARKS	Area is largely overburden covered but contact between 2 diorite bodies and sediments is indicated. Number of pieces of float assayed up to 3 1/2 Cu. IP survey located an anomaly which was checked by geochem and was also anomalous. Recommendations for drilling.	

Appendix "A" to the application of Whitehorse Copper Mines Ltd. executed on July 11, 1973

Appendix "B" to the application of Whitehorse Copper Mines Ltd. executed on July 11, 1973

WHITEHORSE COPPER MINES LTD.

WE Claims 19 - 34

Processed Surface Exploration

INTRODUCTION

The area held by mineral claims WE 19 - 34 (Y 66018, Y 66019, Y 66024, Y 66031, Y 66068 to 75) is located one half mile west of Porter Creek at Mile 922 Alaska Highway. It is accessible from the Alaska Highway by a number of bush roads.

GEOLOGY

The area is on strike of the War Eagle mine, two miles to the south, which produced one million tons at slightly over 1% Cu from 1969 to 1971.

Numerous zones of copper bearing skarn exist to the south and south-east of which the Anaconda and Rabbits Foot are most notable.


The area is largely overburden covered but geological mapping has indicated the probable existence of two diorite, quartzite, limestone contacts with which mineralization in the area is likely to be associated.

Prospecting of the bulldozed firebreak which runs northerly through the claim group has produced a number of pieces of copper bearing skarn float grading up to 3% copper.


PROPOSED EXPLORATION

An I.P. survey of the claims is proposed, since it is the only geophysical method likely to detect mineralization of the type found in the float. (i.e. disseminated bornite and chalcopyrite). The cost of the survey would be \$9,000.00 allowing for 13 line miles (two miles for detail work) at \$500/line mile.

signed


J. Tenney
Chief Geologist

signed


V. F. Cronch, P. Eng.
Gen. Mgr.

June 12, 1973



CASSIUM

ALASKA

WE 33 Y66074	WE 32 Y66070	WE 30 Y66064	WE 28 Y66068
WE 34 Y66031	WE 31 Y66075	WE 29 Y66079	WE 27 Y66073
WE 26 Y66037	WE 24 Y66066	WE 22 Y66061	WE 20 Y66035
WE 25 Y66072	WE 23 Y66071	WE 21 Y66079	WE 19 Y66078

31 0
180N
176N
164N

WHSE
REF. TRAV
↘

CLAIMS LOCATION
1" = 1/2 MILE

WE (N)
R

Whitehorse Copper Mines Ltd.

P O. Box 4280. Whitehorse. Yukon Territory. Canada
telephone (403) 668-2171 telex 049-8218

October 30, 1973

Department of Indian and Northern Affairs
Ottawa, Ontario
K1A 0H4

Attention: Mr. W.G. Cleghorn, A/Chief
Northern Roads and Airstrips Division
Policy and Program Planning Branch

Dear Mr. Cleghorn:

Re: Your file N2668-109

We have just completed an IP survey on our WE 19 to 34 claims. The survey was partially funded by the Northern Mineral Assistance Program.

Results of the work indicate the presence of a chargeability anomaly near a diorite-quartzite contact. All copper bearing skarn occurrences on the Whitehorse copper belt are found within a few hundred feet of diorite-sediments contacts.

Soil sampling in the area of the anomaly yielded some anomalous copper values.

Our geophysical contractor, Kenting Geophysics, has recommended that a hole be drilled to test the anomaly. The proposed hole would be collared at 191N, 28W, -50°, Azimuth 300°, length 1,000 feet.

We have completed our drilling program on Big Chief and Cowley Park zones. The combined proposed drilling for these zones was 4,500 feet while the actual footage drilled was 3,107 feet.

original We request that we be allowed to use the remaining footage (1,393'), to drill targets on our WE 19 - 34 claims.

A sketch containing relevant information on the first area to be tested is attached. Testing of other areas will be contingent on results.

Yours truly,

WHITEHORSE COPPER MINES LTD.







D. Tenney

D. Tenney
Chief Geologist

DT/alp

cc: Dr. D. Craig
W. Boden

Legend:

-  Chargeability
a = 200
-  Chargeability
a = 400'
-  Diorite outcrop
-  Quartzite outcrop
-  area of anomalous
Copper in Soil
(Glaciation direction
is North)
-  Proposed Collar

1" = 400' A.H. Oct '73

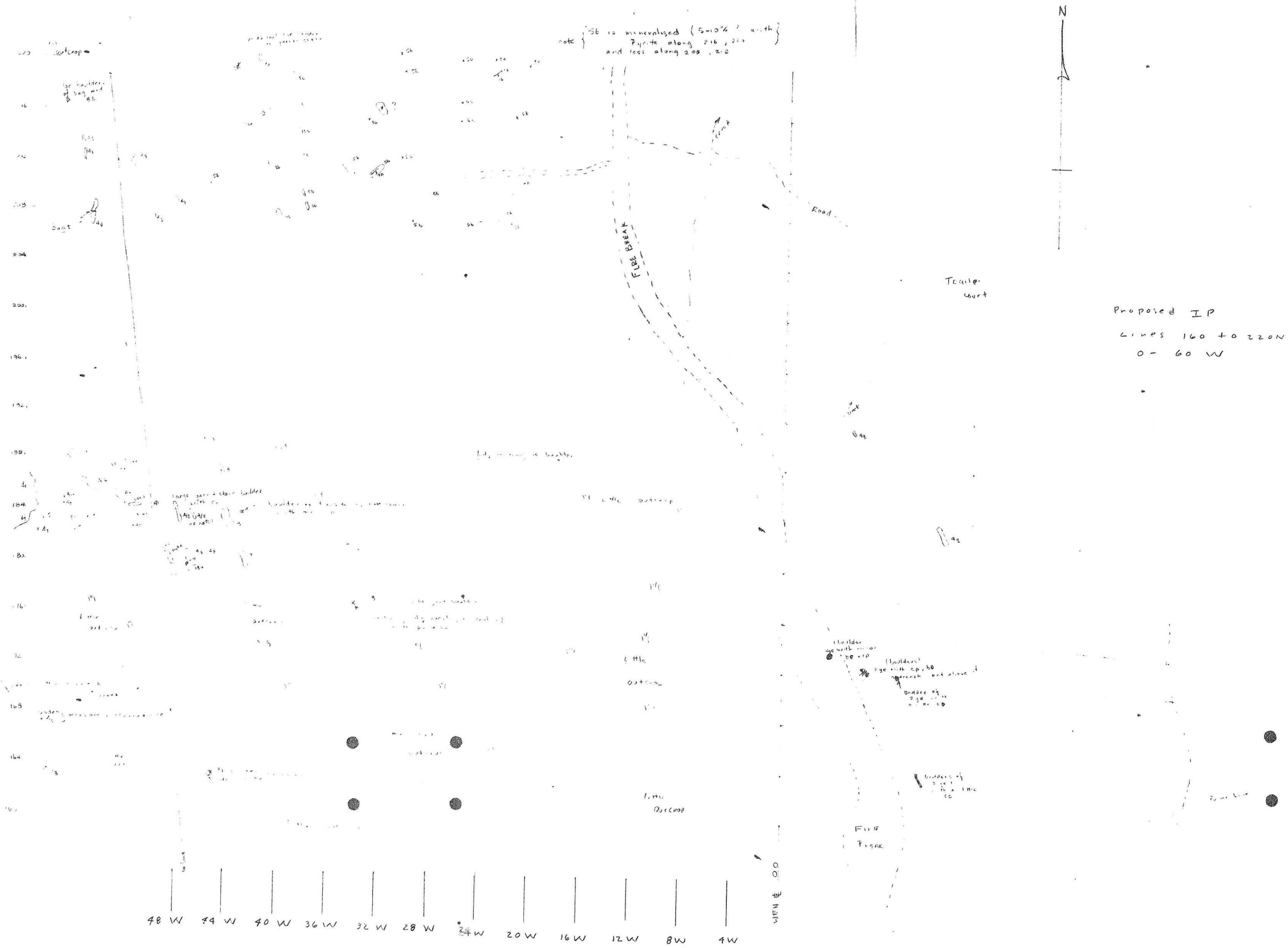
N

1924

33	32	30	28
34	31 W E	29	27
26	24	22	20
25	23	21 W E	19

1" = 1/2 MI





Whitehorse Copper Mines	
State	Yukon
Date	June 1973
Drawn by	M. Macdonald
Scale	1" = 400'
Sheet	VI
Block	SWAMP
Location	SWAMP
Project	SWAMP
Drawn by	M. Macdonald
Checked by	
Approved by	