

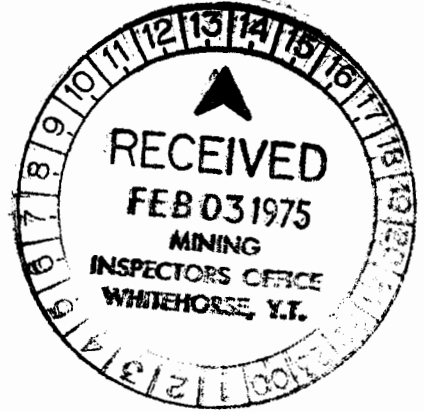
DOLMAGE CAMPBELL & ASSOCIATES LTD.
CONSULTING GEOLOGICAL & MINING ENGINEERS
1000 GUINNESS TOWER
VANCOUVER 1, B.C.



Geochemical Report
on the
POS MINERAL CLAIMS
Nos. 79-84, 88 and 90

Claim Sheet No. 105 1-12

SUMMIT LAKE AREA
Watson Lake Mining Division
Yukon Territory



62° 30' N. Lat., 129° 45' W. Long.

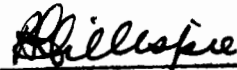
Owner of Claims:
Mr. L. Hart

This report has been examined by the Geological Evaluation Unit and is recommended to the Commissioner to be considered as representation work in the amount of \$ 4000.00



~~Resident Geologist or
Resident Mining Engineer~~

Supervision and Report by ~~Considered as representation work under~~
R. S. Adamson, P. Eng. Section 53 (4) Yukon Quartz Mining Act.



~~Commissioner of Yukon Territory~~
ADMINISTRATOR OF THE YUKON TERRITORY

Work completed between July 18 and August 1, 1974

December 10, 1974

TABLE OF CONTENTS

	<u>Page</u>
INTRODUCTION	1
SOIL SURVEY	1
SAMPLING AND ASSAYING TECHNIQUES	2
INTERPRETATION OF RESULTS	2
CONCLUSIONS	2
Recommendations	3
APPENDIX 1 - Statutory Declaration	
APPENDIX 2 - Statement of Labour Costs	

LIST OF ILLUSTRATIONS

	<u>Following Page</u>
FIGURE 1 Location Map	1
FIGURE 2 Claim Map	1
FIGURE 3 Lead Geochemistry	Pocket
FIGURE 4 Zinc Geochemistry	Pocket

DOLMAGE CAMPBELL & ASSOCIATES LTD.
CONSULTING GEOLOGICAL & MINING ENGINEERS
1000 GUINNESS TOWER
VANCOUVER 1, B.C.

INTRODUCTION

A geochemical soil survey was carried out on the POS claims by Dolmage Campbell and Associates Ltd. during the period July 18 to August 1, 1974. The survey was undertaken by Mr. J. B. Kirkland and Mr. D. Hammer under the supervision of the writer.

The soil survey was initiated in order to more-precisely define a strong zinc anomaly detected during a 1973 soil survey. In addition to carrying out a more detailed soil survey in 1974, the area surrounding the anomalous zinc values was prospected in detail with a view to isolating a bedrock source of the zinc in soils.

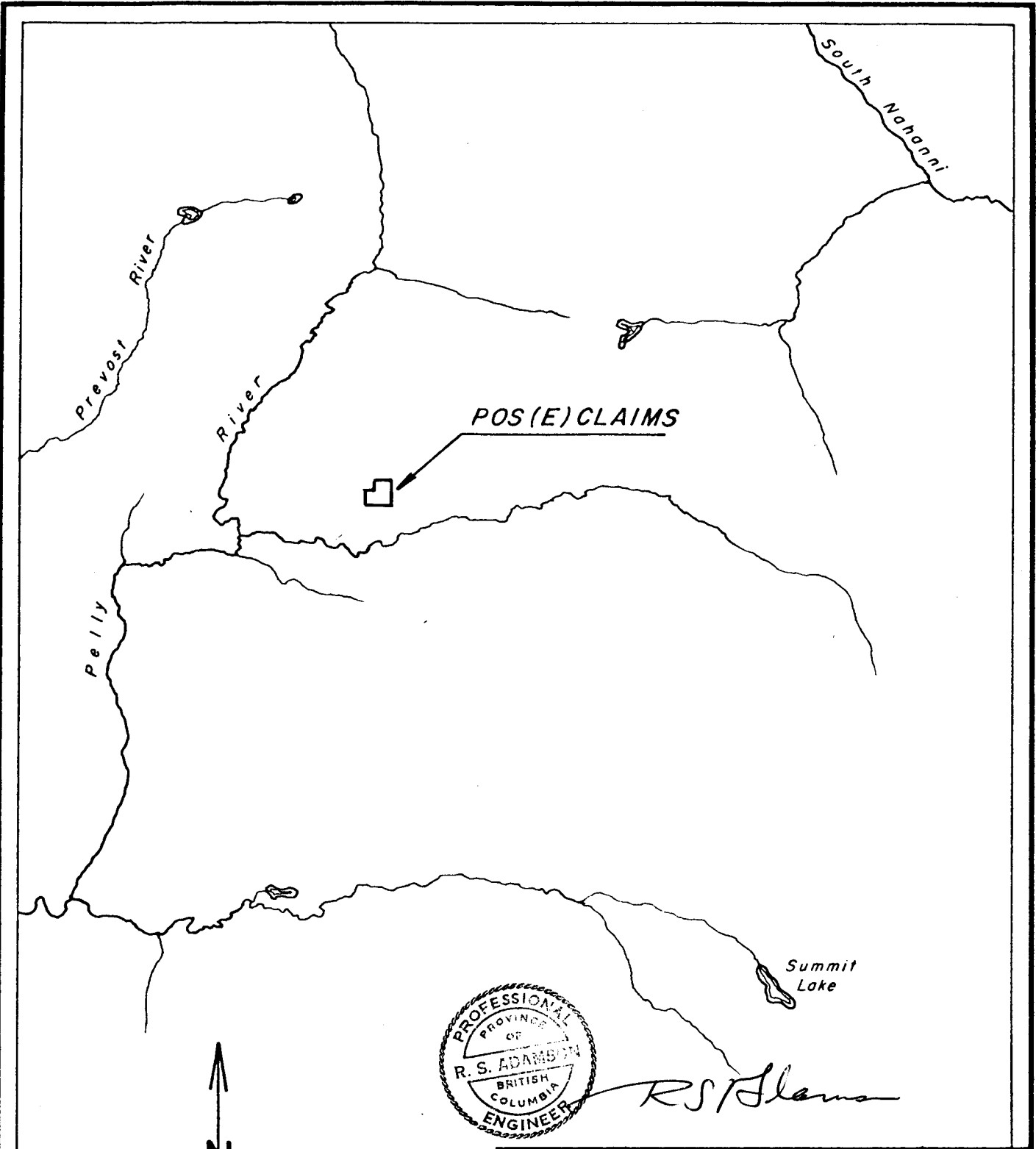
The property was reduced in size to eight claims from the initial 32 claims which were contained in the POS property. The property was staked initially as a result of the discovery of economically-significant lead-zinc deposits several miles to the south in 1972 by Canex-Placer Ltd.

For information on the 1973 soil survey, reference should be made to a report submitted for assessment purposes entitled "Geochemical Report on the POS MINERAL CLAIMS, Nos. 63-94 inclusive, Claim Sheet 105 1-12, Summit Lake Area, Yukon" by R. S. Adamson, P.Eng. dated October 24, 1973.

SOIL SURVEY

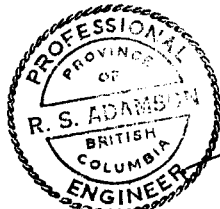
The 1974 soil survey was carried out over flagged lines, intermediate to lines sampled in 1973. The 1973 lines were spaced at 500 foot intervals. The combined survey was carried out only over an area 4000 feet by 2400 feet on POS claims 81-84 and 90, (Figure 2). Sample stations in 1974 on the intermediate lines were at 100 foot intervals.

A total of 166 soil samples and 14 stream samples were taken during the 1974 survey. Control was maintained by compass and chain survey and stations were flagged as sampling proceeded.

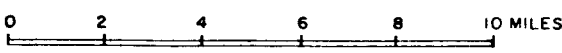


POS(E) CLAIMS

Summit Lake

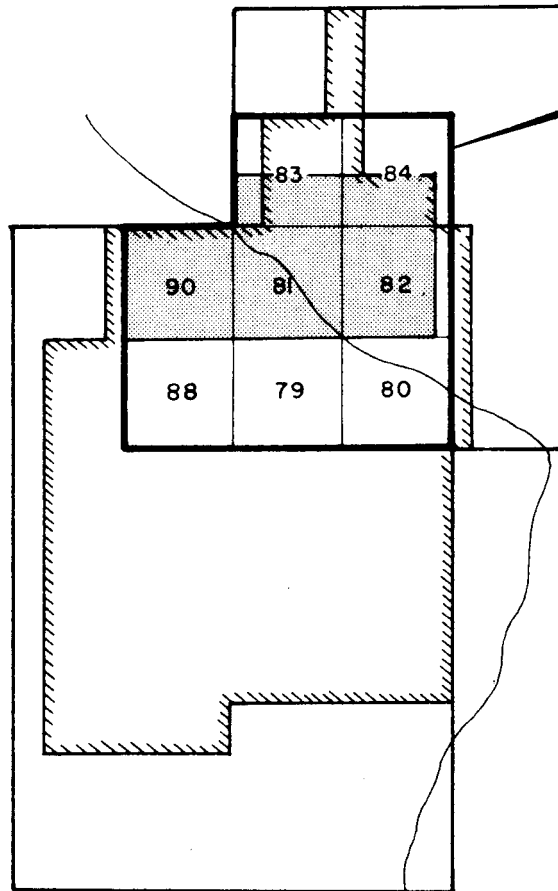


R. S. Adams

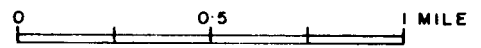


DOLMAGE CAMPBELL & ASSOCIATES LTD. CONSULTANTS VANCOUVER, CANADA	
THOR EXPLORATIONS LTD. VANCOUVER, CANADA	
<u>POS (E) CLAIMS</u>	
LOCATION MAP	
SCALE: 1 : 250,000	DEC. 1974
	FIG. 1

POS (E) CLAIMS



R. S. Adamson



1973 Surveyed Area



1974 Surveyed Area

DOLMAGE CAMPBELL & ASSOCIATES LTD. CONSULTANTS
VANCOUVER, CANADA

THOR EXPLORATIONS LTD.
VANCOUVER, CANADA

POS (E) CLAIMS

CLAIM MAP

SCALE: 1" = 0.5 MILE

DEC. 1974

FIG. 2

SAMPLING AND ASSAYING TECHNIQUES

Soil samples were taken by first digging a hole with a mattock; a small handful of soil was then taken and packaged in a standard high wet-strength brown kraft paper sample bag. Wherever possible, samples were taken from the "B" soil horizon. If the "B" horizon could not be reached the samples were taken from the "A" horizon and noted as such. The samples were sent to Chemex Labs Ltd. in North Vancouver for analysis.

At the assay laboratory the samples were dried at 110° F and then sieved to -80 mesh consistency through a nylon and stainless steel sieve. One-half gram of the dry pulp was weighed into a calibrated test tube and 3 mls. of perchloric acid and 1 ml. of nitric acid was added. The samples were digested initially at low heat and then at a temperature of 203° C. Digestion time was two to three hours. The digested samples were cooled, made up to 25 ml. volume with distilled water and the solutions thoroughly mixed. Analysis for lead and zinc were then done by Atomic Absorption procedures.

INTERPRETATION OF RESULTS

No zinc mineralization has yet been discovered in the area, either in bedrock or as float. Rocks in outcrop, which occur largely above timberline, are primarily dark grey to black, moderately-bedded argillites. Reddish-brown, fine grained conglomerates occur in minor amounts.

The lead values are low. No anomalous values are evident, hence the results were not contoured, (Figure 3).

A well-defined, irregularly-shaped, strong anomaly has been identified by contouring zinc values, (Figure 4). Values in excess of 2000 ppm and in excess of 4000 ppm were contoured. The anomaly contains 27 samples, of which 15 are in excess of 4000 ppm zinc. Significantly, the distribution and extent of the anomaly appears to coincide, in part, with a dense growth of willows that lies on a hillside which otherwise is only lightly vegetated.

CONCLUSIONS

The relationship of the zinc anomaly with the vegetation and the restricted topographic conditions indicates that the source of the anomaly is local in nature and confined to a relatively-narrow draw. Because the surrounding geology

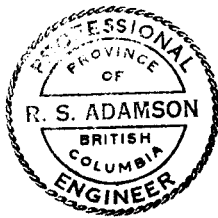
consisting of a monotonous succession of argillites offers little opportunity for the existence of a stratiform-type zinc deposit and because of the remoteness of the Summit Lake region, follow-up exploration to determine precisely the source of the zinc should be limited in scope.

RECOMMENDATIONS

A minor exploration program consisting of hand trenching is proposed. A series of short test pits and trenches should be dug to bedrock, if possible, at intervals along the side of the draw. The trenching should be supported by blasting. Zinc mineralization, in place or as float, should be then examined by a geologist to determine the nature and significance of the occurrence.

Respectfully submitted by,

DOLMAGE CAMPBELL & ASSOCIATES LTD.



A handwritten signature in cursive script that reads "R. S. Adamson".

R. S. Adamson, P.Eng.

DOMINION OF CANADA:
PROVINCE OF BRITISH COLUMBIA.
To WIT:

In the Matter of

L. HART - POS MINERAL CLAIMS
NOS. 63-94 INCLUSIVE

I, R. S. ADAMSON

of 1000 - 1055 W. Hastings St., Vancouver 1, B.C.

in the Province of British Columbia, do solemnly declare that

Expenditures for work performed on the POS mineral claims between JULY 18 and AUGUST 1, 1974, are as follows:

WAGES - 15 man days @ \$85.00	\$ 1,275.00
MAINTENANCE - 30 man days @ \$20.00	600.00
HELICOPTER - 6.3 hrs. @ \$150 - HILLER 12E	2,056.50
3.8 hrs. @ \$290 - BELL 206	
ASSAYING - 178 samples	283.50
TYPING, SECRETARIAL, DRAUGHTING	200.00
SUPERVISION and REPORT	<u>800.00</u>
	\$ 5,215.00

And I make this solemn declaration conscientiously believing it to be true, and knowing that it is of the same force and effect as if made under oath and by virtue of the "Canada Evidence Act."

Declared before me at the
of *Vancouver*, in the
Province of British Columbia, this *7*
day of *January*, 1975, A.D.

R S Adamson

[Signature]
~~A Commissioner, etc.~~
~~A Commissioner for taking Affidavits within British Columbia or~~
~~A Notary Public in and for the Province of British Columbia.~~
Yukon Territory

156+00 N

148+00 N

140+00 N

132+00 N

124+00 N

116+00 N

68+00 E

76+00 E

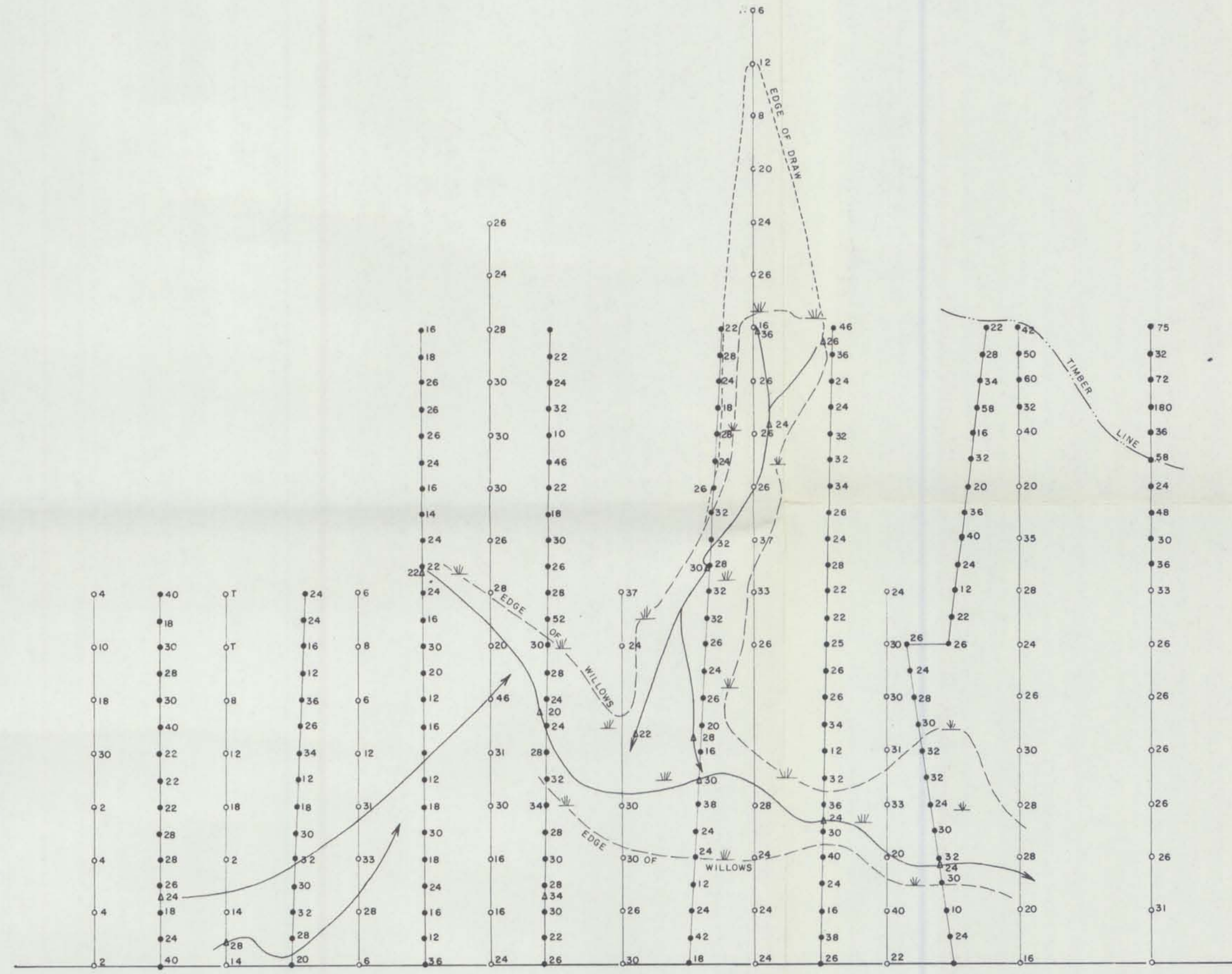
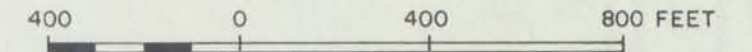
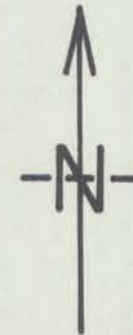
84+00 E

92+00 E

100+00 E

108+00 E

116+00 E



LEGEND

- 1974 SAMPLES
- 1973 SAMPLES
- ⊖ WILLOWS SWAMP
- △ SILT SAMPLE



R. S. Adamson

DOLMAGE CAMPBELL & ASSOCIATES LTD. CONSULTANTS
VANCOUVER, CANADA

THOR EXPLORATIONS LTD.
VANCOUVER, CANADA

POS (E) CLAIMS

LEAD GEOCHEMISTRY

SCALE : 1" = 400'

DEC. 1974

FIG. 3

156+00 N

148+00 N

140+00 N

132+00 N

124+00 N

116+00 N

68+00 E

76+00 E

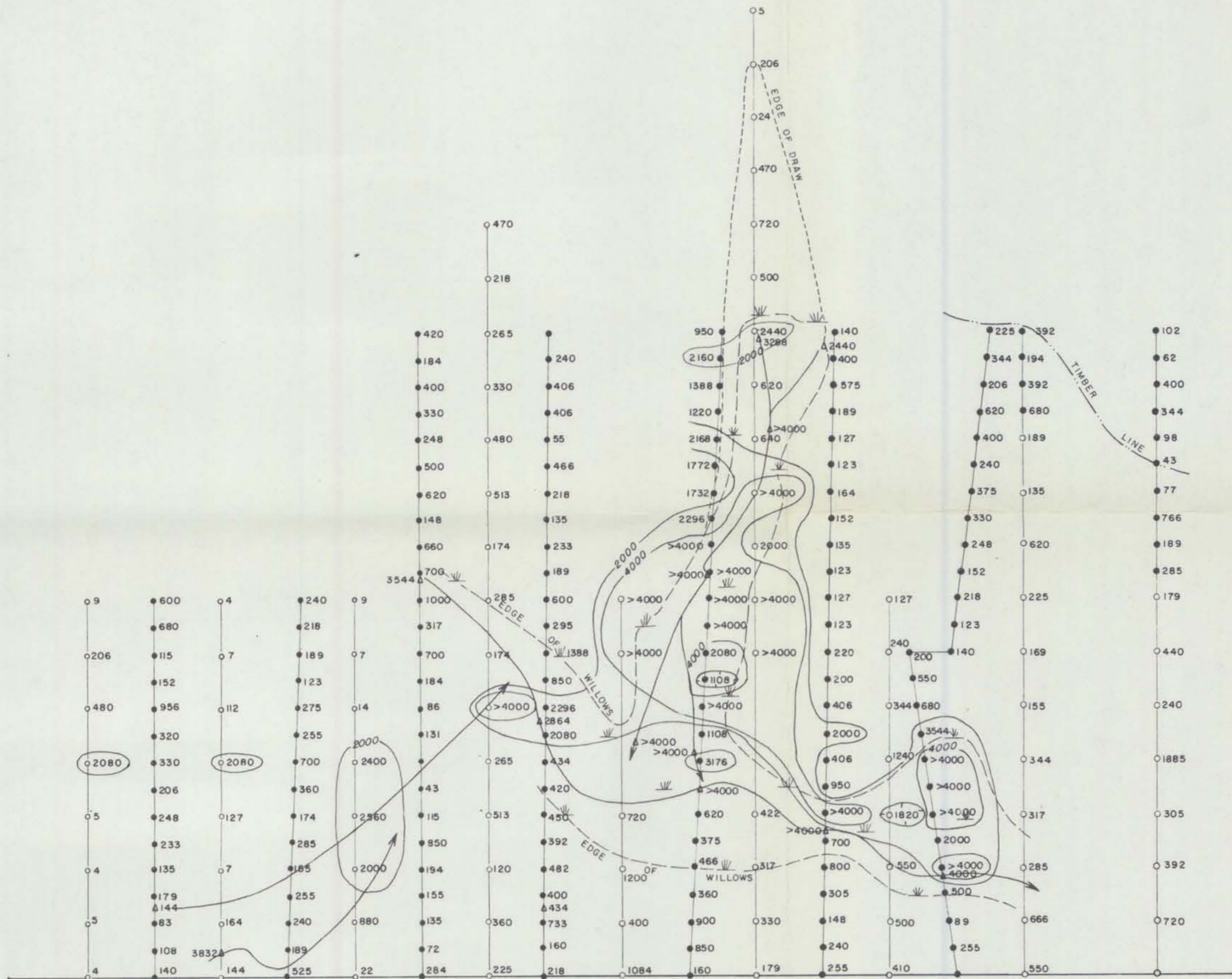
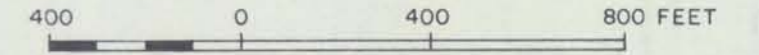
84+00 E

92+00 E

100+00 E

108+00 E

116+00 E



LEGEND

- 1974 SAMPLES
- 1973 SAMPLES
- WILLOWS SWAMP
- 2000
4000 CONTOURS IN PPM.
- △ SILT SAMPLES



R. S. Adamson

DOLMAGE CAMPBELL & ASSOCIATES LTD. CONSULTANTS
VANCOUVER, CANADA

THOR EXPLORATIONS LTD.
VANCOUVER, CANADA

POS (E) CLAIMS

ZINC GEOCHEMISTRY

SCALE : 1" = 400'

DEC. 1974

FIG. 4