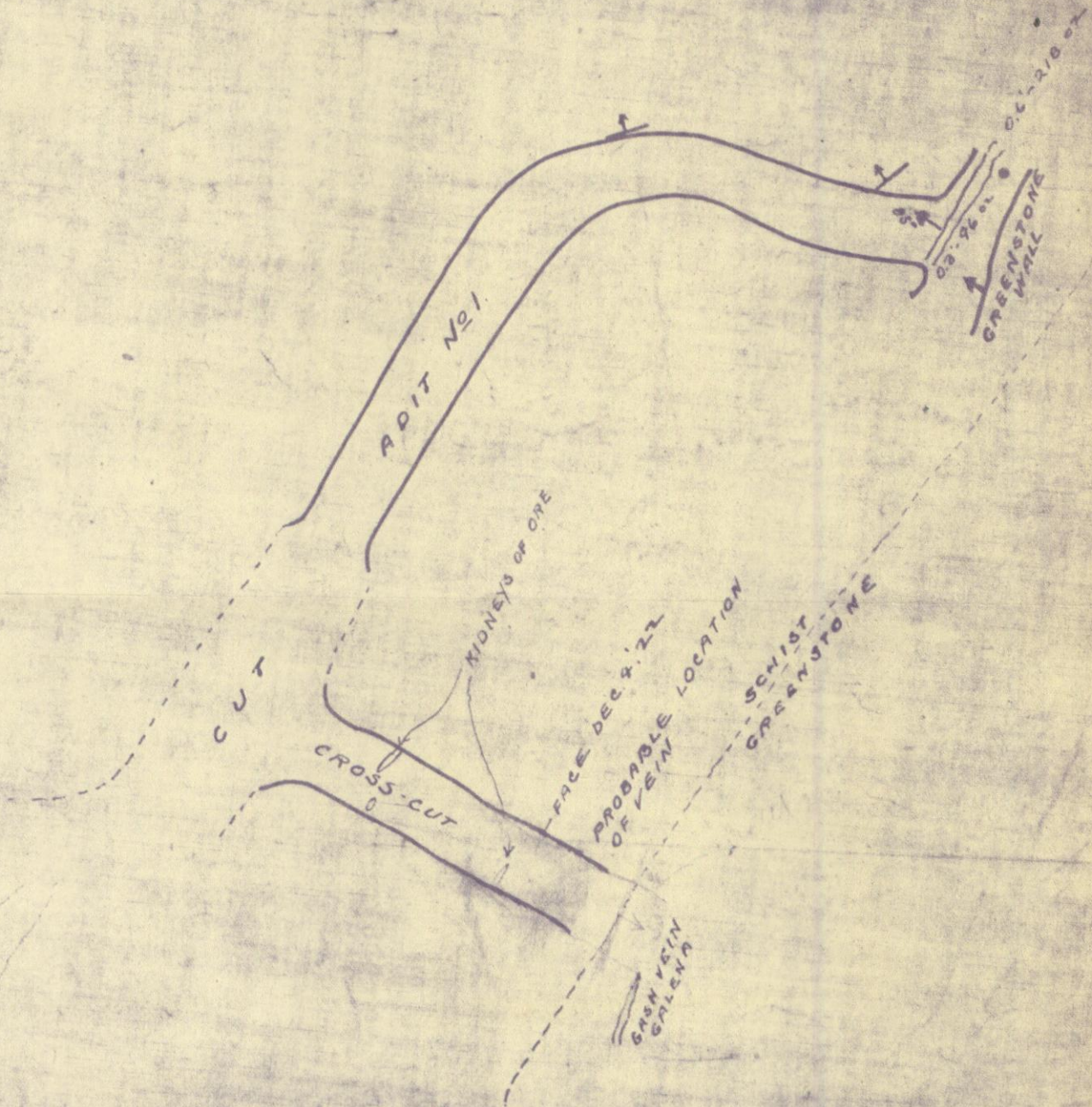
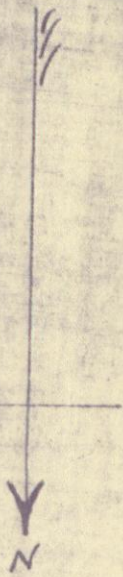
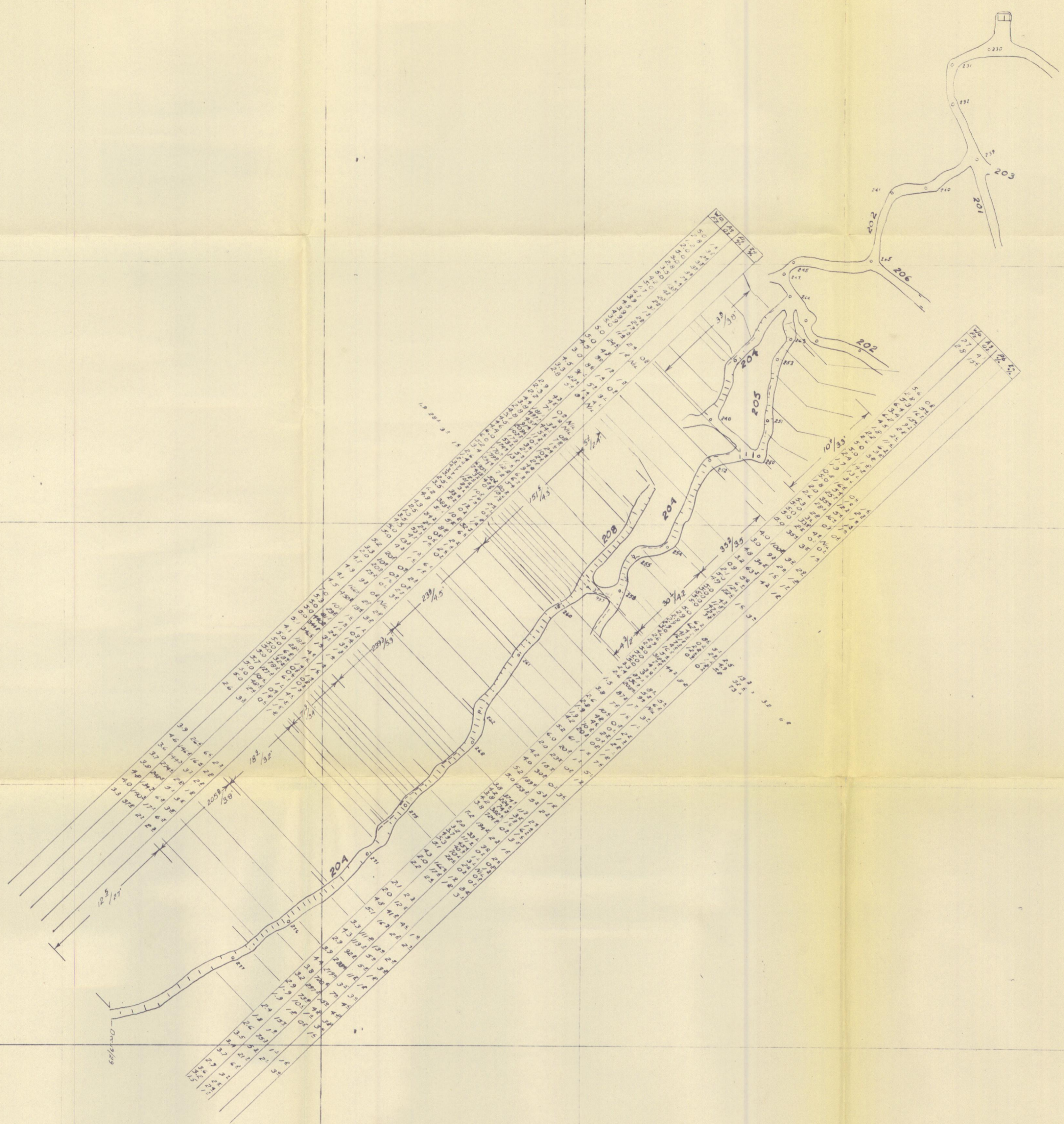


LUCKY QUEEN

SCALE 100' = 1"





ASSAY PLAN
 LUCKY QUEEN
 200 LEVEL
 SCALE 1"=50'
 NOTE: ASSAY AVERAGES UNCOR.

Compiled from TX Assay Plans - 2541401 2/12/47 189

26200 W

26300 W

26400 W

25600 W

28200 N

28000 N

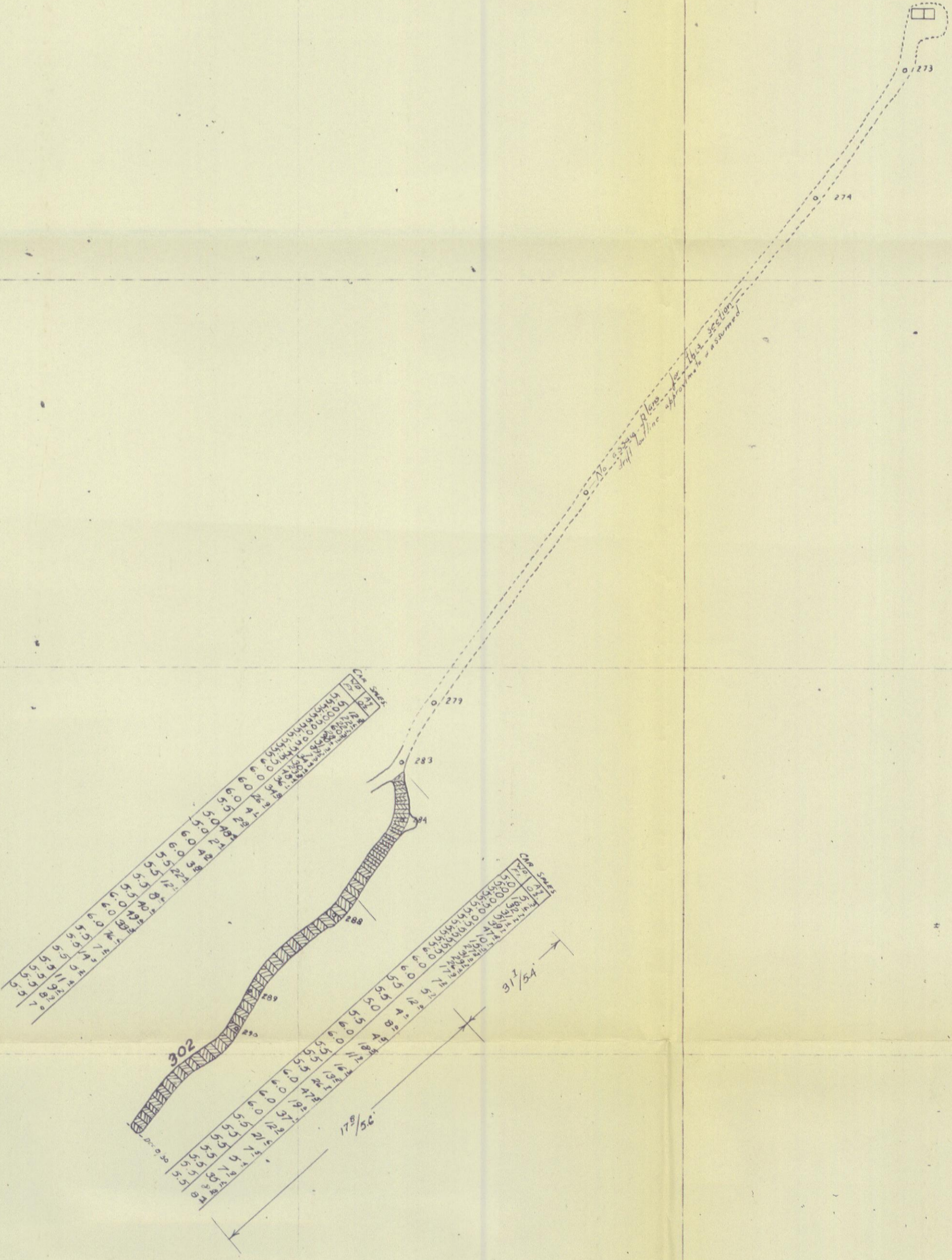
27800 N

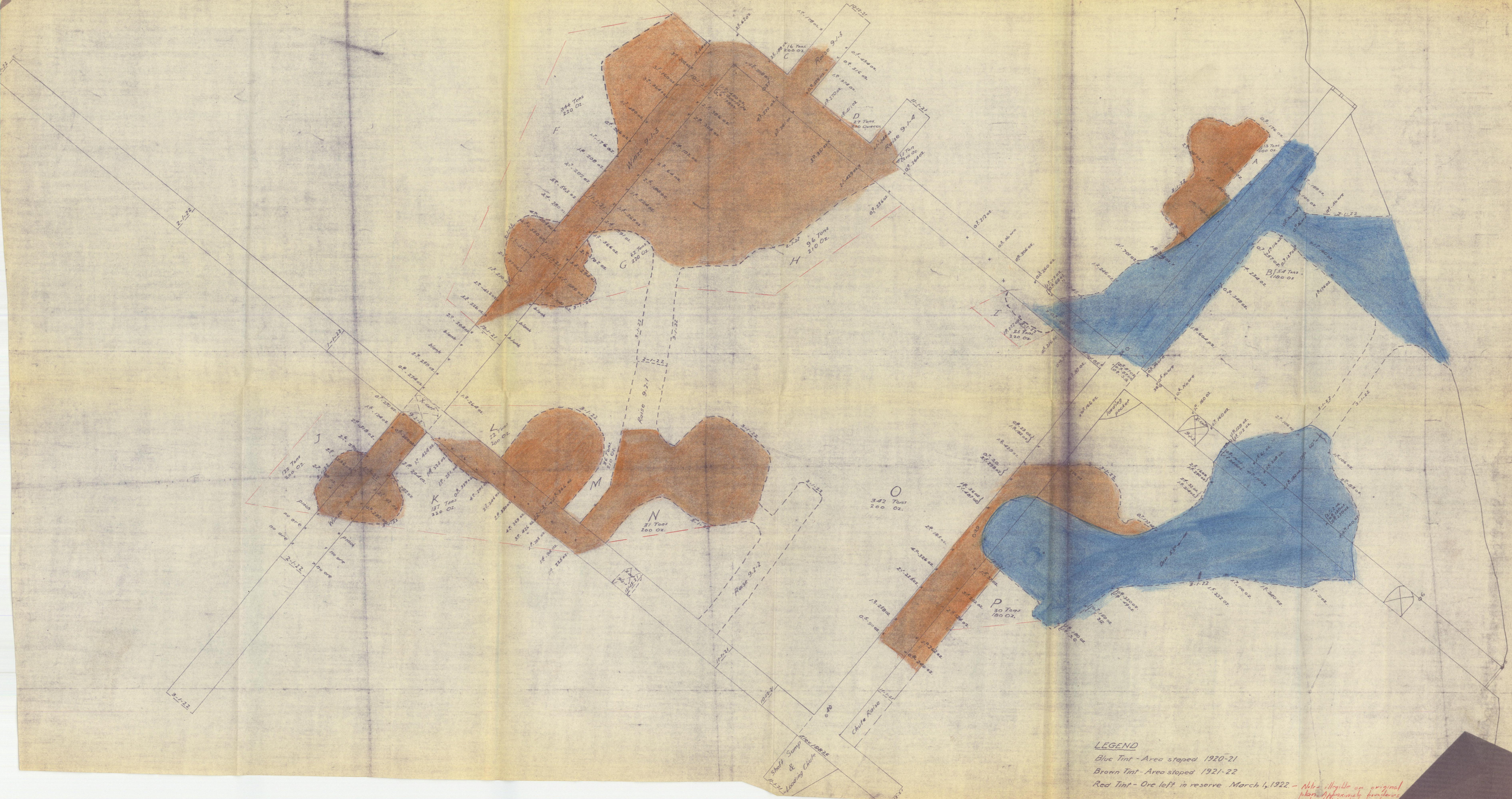
27600 N

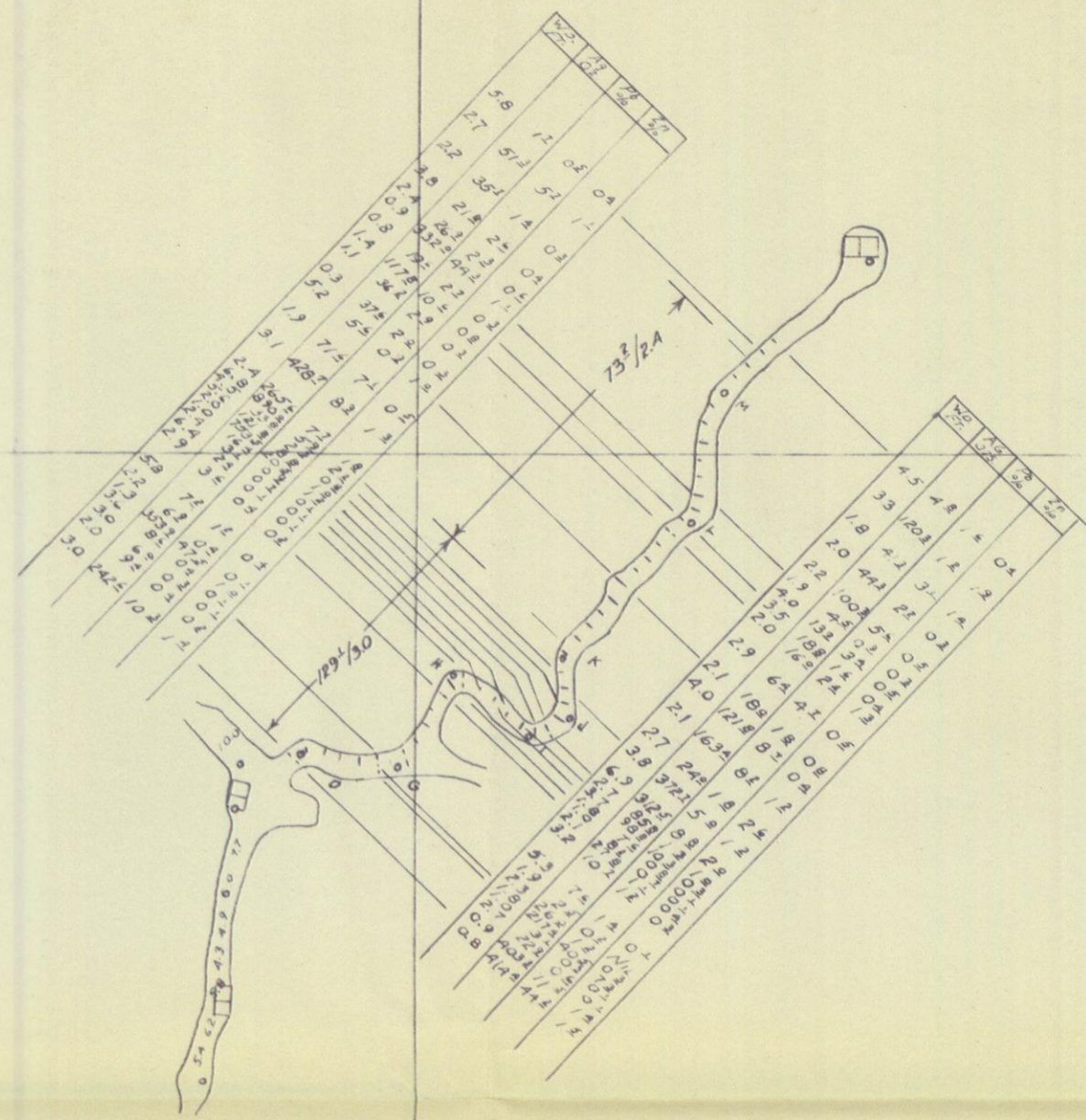
27400 N

ASSAY PLAN
 LUCKY QUEEN
 300 LEVEL
 SCALE 1"=50'
 NOTE: ASSAY AREAS UNOBT

Compiled from EX Assay Plans - 2461-62 2/12/53







ASSAY PLAN
 LUCKY QUEEN
 50 LEVEL
 SCALE 1" = 50'

NOTE: ASSAY AVERAGES UNCORRECTED
 Compiled from T.Y. Assay Plans - Sketches 2/1/49 R.B.

28200 N

28300 N

28400 N

28500 N

28600 N

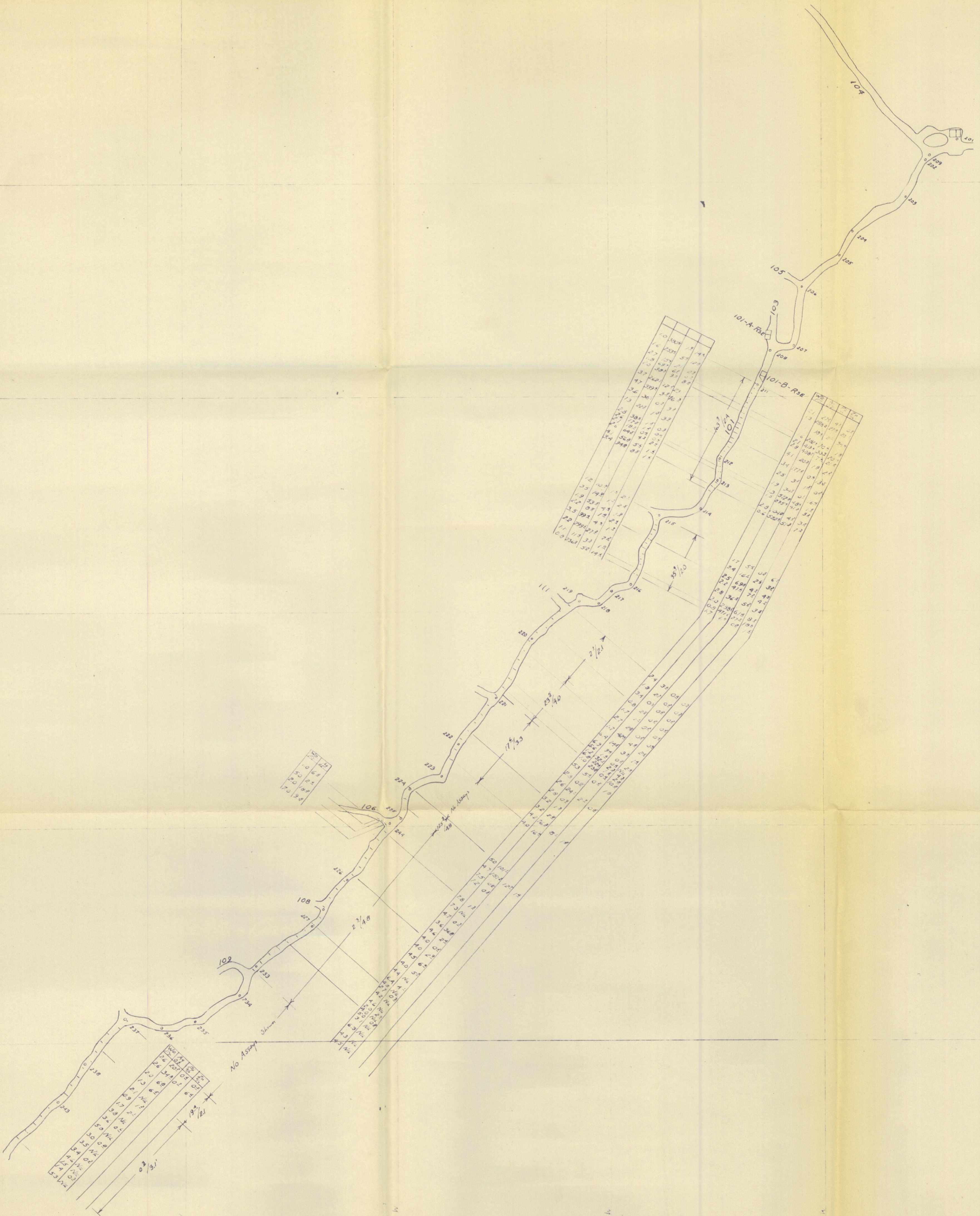
28200 N

28300 N

28400 N

28500 N

28600 N



ASSAY PLAN
 LUCKY QUEEN
 100 LEVEL
 SCALE 1"=50'

NOTE: ASSAY AVERAGES USED

Compiled from T.X. Assay Plans - 2/12/52

Sample No.	Weight	Assay
101	100	10.0
102	100	10.0
103	100	10.0
104	100	10.0
105	100	10.0
106	100	10.0
107	100	10.0
108	100	10.0
109	100	10.0
110	100	10.0
111	100	10.0
112	100	10.0
113	100	10.0
114	100	10.0
115	100	10.0
116	100	10.0
117	100	10.0
118	100	10.0
119	100	10.0
120	100	10.0
121	100	10.0
122	100	10.0
123	100	10.0
124	100	10.0
125	100	10.0
126	100	10.0
127	100	10.0
128	100	10.0
129	100	10.0
130	100	10.0
131	100	10.0
132	100	10.0
133	100	10.0
134	100	10.0
135	100	10.0
136	100	10.0
137	100	10.0
138	100	10.0
139	100	10.0
140	100	10.0
141	100	10.0
142	100	10.0
143	100	10.0
144	100	10.0
145	100	10.0
146	100	10.0
147	100	10.0
148	100	10.0
149	100	10.0
150	100	10.0
151	100	10.0
152	100	10.0
153	100	10.0
154	100	10.0
155	100	10.0
156	100	10.0
157	100	10.0
158	100	10.0
159	100	10.0
160	100	10.0
161	100	10.0
162	100	10.0
163	100	10.0
164	100	10.0
165	100	10.0
166	100	10.0
167	100	10.0
168	100	10.0
169	100	10.0
170	100	10.0
171	100	10.0
172	100	10.0
173	100	10.0
174	100	10.0
175	100	10.0
176	100	10.0
177	100	10.0
178	100	10.0
179	100	10.0
180	100	10.0
181	100	10.0
182	100	10.0
183	100	10.0
184	100	10.0
185	100	10.0
186	100	10.0
187	100	10.0
188	100	10.0
189	100	10.0
190	100	10.0
191	100	10.0
192	100	10.0
193	100	10.0
194	100	10.0
195	100	10.0
196	100	10.0
197	100	10.0
198	100	10.0
199	100	10.0
200	100	10.0

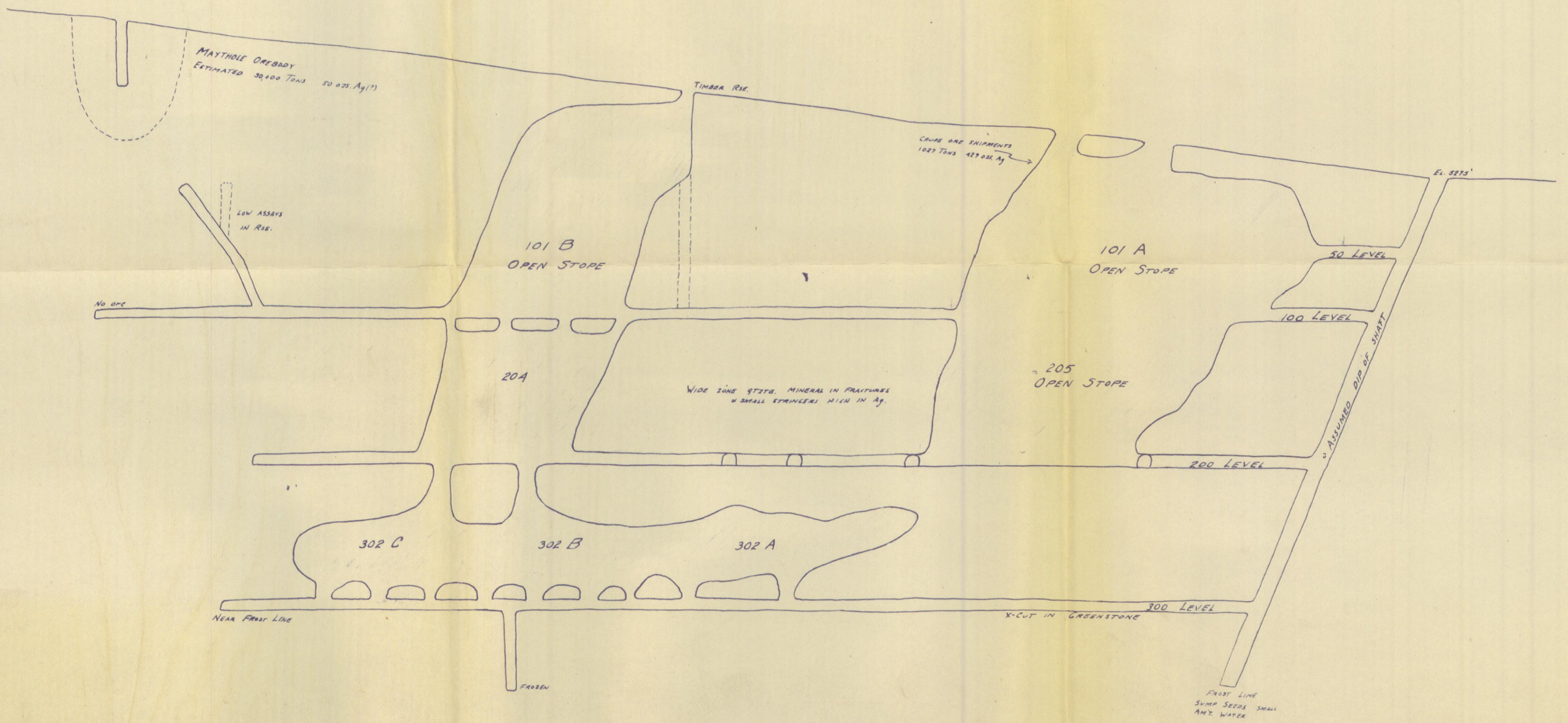
Sample No.	Weight	Assay
201	100	10.0
202	100	10.0
203	100	10.0
204	100	10.0
205	100	10.0
206	100	10.0
207	100	10.0
208	100	10.0
209	100	10.0
210	100	10.0
211	100	10.0
212	100	10.0
213	100	10.0
214	100	10.0
215	100	10.0
216	100	10.0
217	100	10.0
218	100	10.0
219	100	10.0
220	100	10.0
221	100	10.0
222	100	10.0
223	100	10.0
224	100	10.0
225	100	10.0
226	100	10.0
227	100	10.0
228	100	10.0
229	100	10.0
230	100	10.0
231	100	10.0
232	100	10.0
233	100	10.0
234	100	10.0
235	100	10.0
236	100	10.0
237	100	10.0
238	100	10.0
239	100	10.0
240	100	10.0
241	100	10.0
242	100	10.0
243	100	10.0
244	100	10.0
245	100	10.0
246	100	10.0
247	100	10.0
248	100	10.0
249	100	10.0
250	100	10.0

Sample No.	Weight	Assay
251	100	10.0
252	100	10.0
253	100	10.0
254	100	10.0
255	100	10.0
256	100	10.0
257	100	10.0
258	100	10.0
259	100	10.0
260	100	10.0
261	100	10.0
262	100	10.0
263	100	10.0
264	100	10.0
265	100	10.0
266	100	10.0
267	100	10.0
268	100	10.0
269	100	10.0
270	100	10.0
271	100	10.0
272	100	10.0
273	100	10.0
274	100	10.0
275	100	10.0
276	100	10.0
277	100	10.0
278	100	10.0
279	100	10.0
280	100	10.0
281	100	10.0
282	100	10.0
283	100	10.0
284	100	10.0
285	100	10.0
286	100	10.0
287	100	10.0
288	100	10.0
289	100	10.0
290	100	10.0
291	100	10.0
292	100	10.0
293	100	10.0
294	100	10.0
295	100	10.0
296	100	10.0
297	100	10.0
298	100	10.0
299	100	10.0
300	100	10.0

Sample No.	Weight	Assay
301	100	10.0
302	100	10.0
303	100	10.0
304	100	10.0
305	100	10.0
306	100	10.0
307	100	10.0
308	100	10.0
309	100	10.0
310	100	10.0
311	100	10.0
312	100	10.0
313	100	10.0
314	100	10.0
315	100	10.0
316	100	10.0
317	100	10.0
318	100	10.0
319	100	10.0
320	100	10.0
321	100	10.0
322	100	10.0
323	100	10.0
324	100	10.0
325	100	10.0
326	100	10.0
327	100	10.0
328	100	10.0
329	100	10.0
330	100	10.0
331	100	10.0
332	100	10.0
333	100	10.0
334	100	10.0
335	100	10.0
336	100	10.0
337	100	10.0
338	100	10.0
339	100	10.0
340	100	10.0
341	100	10.0
342	100	10.0
343	100	10.0
344	100	10.0
345	100	10.0
346	100	10.0
347	100	10.0
348	100	10.0
349	100	10.0
350	100	10.0

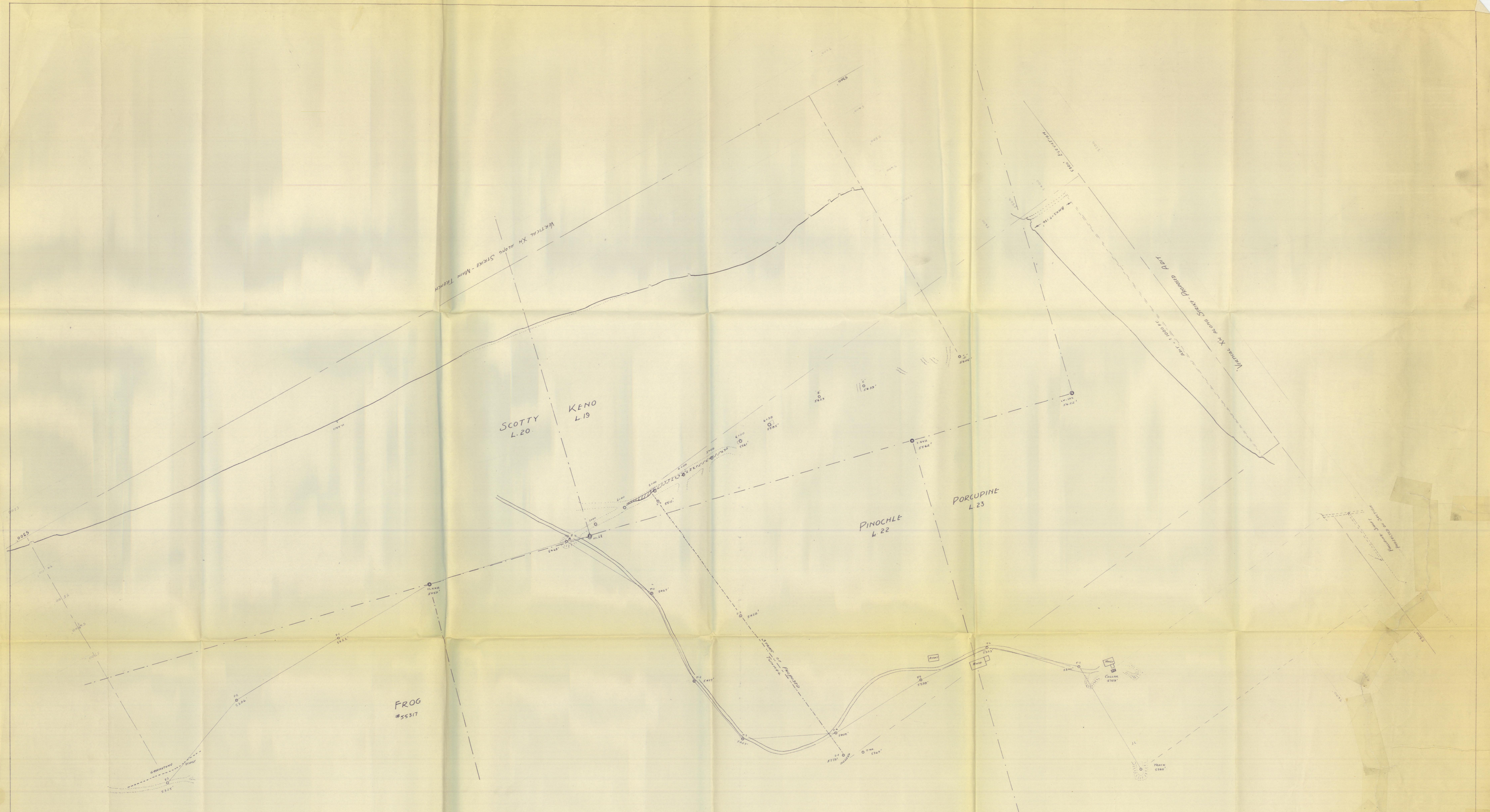
SUMMARY LUCKY QUEEN PRODUCTION - TOTALS TO DEC 31/30

LEVEL	TONS	Ag	Pb	Zn
<u>50 LEVEL</u>				
DEVELOPMENT	1143	287.4	22.9	3.5
50 N. STOPE	1661	127.9	17.6	1.6
<u>100 LEVEL</u>				
DEVELOPMENT	1105	133.5	11.34	5.08
101 A STOPE	9054	232.6	24.54	40.5
101 B "	417	66.1	6.4	4.2
100 N "	4947	127.5	11.79	2.81
<u>200 LEVEL</u>				
DEVELOPMENT	2143	84.1	5.61	3.1
202A STOPE	758	52.4	1.9	2.8
204S "	5745	99.6	4.7	3.5
204N "	1624	105.9	7.8	4.7
205 "	5533	30.2	5.3	4.5
<u>300 LEVEL</u>				
DEVELOPMENT	309	39.2	1.1	2.0
302A/B/C STOPS	7377	76.7	4.4	2.4
	<u>41816</u>	<u>131.40</u>	<u>11.15</u>	<u>3.44</u>



SECTION - LUCKY QUEEN
(SKETCH ONLY)
SCALE 1" = 50'

COPIED FROM A SKETCH BY A. BERRY



UNITED KENO HILL MINES LTD.
 PORCUPINE CAMP
 PROPOSED ADIT TO NO. 6 VEIN.
 SCALE 100 FT = 1 IN.
 DATE: SEPT 23, 1914